

Product datasheet for **AP20685PU-S**

Cofilin 1 (CFL1) Rabbit Polyclonal Antibody

Product data:

| | |
|-------------------------|--|
| Product Type: | Primary Antibodies |
| Applications: | IF, IHC, WB |
| Recommended Dilution: | Western blot: 1/500 - 1/1000. Immunohistochemistry on paraffin sections 1/50 - 1/200. Immunofluorescence: 1/50 - 1/200. |
| Reactivity: | Human, Mouse, Rat |
| Host: | Rabbit |
| Clonality: | Polyclonal |
| Specificity: | This antibody detects endogenous levels of Cofilin protein. (region surrounding Met1) |
| Formulation: | Phosphate buffered saline (PBS), pH 7.2 State: Aff - Purified State: Liquid purified Ig fraction Preservative: 0.05% sodium azide |
| Concentration: | 1.0 mg/ml |
| Purification: | Affinity chromatography (> 95% (by SDS-PAGE) |
| Conjugation: | Unconjugated |
| Storage: | Store undiluted at 2-8°C for one month or (in aliquots) at -20°C for longer. Avoid repeated freezing and thawing. |
| Stability: | Shelf life: one year from despatch. |
| Predicted Protein Size: | ~ 19 kDa |
| Gene Name: | cofilin 1 |
| Database Link: | Entrez Gene 12631 Mouse Entrez Gene 29271 Rat Entrez Gene 1072 Human P23528 |



[View online »](#)

Background:

Cofilin is ubiquitously expressed in eukaryotic cells where it binds to Actin, thereby regulating the rapid cycling of Actin assembly and disassembly essential for cellular viability. Cofilin is a low molecular weight protein that binds to filamentous F-Actin by bridging two longitudinally associated Actin subunits changing the F-Actin filament twist. This process is allowed by the dephosphorylation of Cofilin Ser 3 by factors such as opsonized zymosan. Lim kinase 1, a serine kinase, phosphorylates Cofilin and renders it unable to bind and depolymerise F-Actin.

Synonyms:

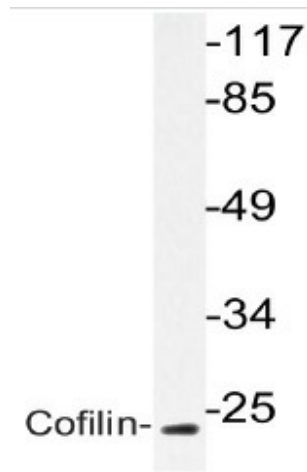
CFL1, CFL, p18

Protein Families:

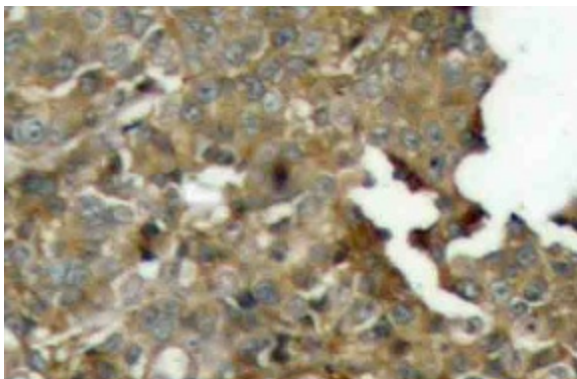
Druggable Genome

Protein Pathways:

Axon guidance, Fc gamma R-mediated phagocytosis, Regulation of actin cytoskeleton

Product images:


Western blot (WB) analyzes of Cofilin antibody (Cat.-No.: [AP20685PU-N]) in extracts from Jurkat cells.



Immunohistochemistry (IHC) analyzes of Cofilin antibody (Cat.-No.: [AP20685PU-N]) in paraffin-embedded human breast carcinoma tissue.