

## Product datasheet for **AP20685PU-M**

### Cofilin 1 (CFL1) Rabbit Polyclonal Antibody

#### Product data:

Product Type:	Primary Antibodies
Applications:	IF, IHC, WB
Recommended Dilution:	<b>Western blot:</b> 1/500 - 1/1000. <b>Immunohistochemistry on paraffin sections</b> 1/50 - 1/200. <b>Immunofluorescence:</b> 1/50 - 1/200.
Reactivity:	Human, Mouse, Rat
Host:	Rabbit
Clonality:	Polyclonal
Specificity:	This antibody detects endogenous levels of Cofilin protein. (region surrounding Met1)
Formulation:	Phosphate buffered saline (PBS), pH 7.2 State: Aff - Purified State: Liquid purified Ig fraction Preservative: 0.05% sodium azide
Concentration:	1.0 mg/ml
Purification:	Affinity chromatography (> 95% (by SDS-PAGE)
Conjugation:	Unconjugated
Storage:	Store undiluted at 2-8°C for one month or (in aliquots) at -20°C for longer. Avoid repeated freezing and thawing.
Stability:	Shelf life: one year from despatch.
Predicted Protein Size:	~ 19 kDa
Gene Name:	cofilin 1
Database Link:	<a href="#">Entrez Gene 12631 Mouse</a> <a href="#">Entrez Gene 29271 Rat</a> <a href="#">Entrez Gene 1072 Human</a> <a href="#">P23528</a>



[View online »](#)

**Background:**

Cofilin is ubiquitously expressed in eukaryotic cells where it binds to Actin, thereby regulating the rapid cycling of Actin assembly and disassembly essential for cellular viability. Cofilin is a low molecular weight protein that binds to filamentous F-Actin by bridging two longitudinally associated Actin subunits changing the F-Actin filament twist. This process is allowed by the dephosphorylation of Cofilin Ser 3 by factors such as opsonized zymosan. Lim kinase 1, a serine kinase, phosphorylates Cofilin and renders it unable to bind and depolymerise F-Actin.

**Synonyms:**

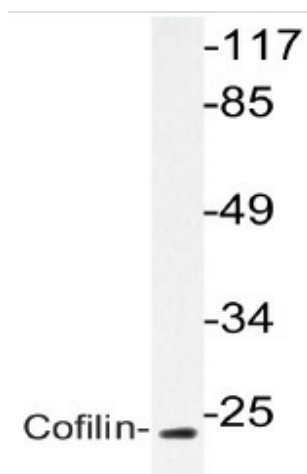
CFL1, CFL, p18

**Protein Families:**

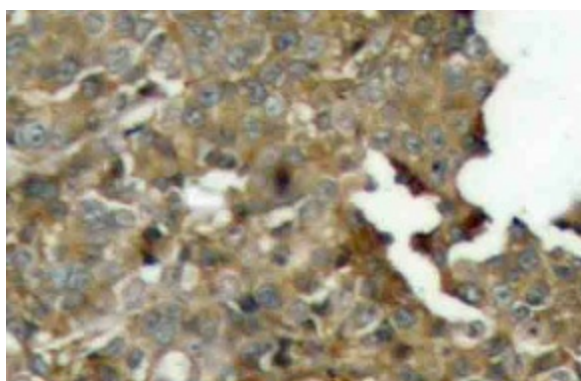
Druggable Genome

**Protein Pathways:**

Axon guidance, Fc gamma R-mediated phagocytosis, Regulation of actin cytoskeleton

**Product images:**


Western blot (WB) analyzes of Cofilin antibody (Cat.-No.: [AP20685PU-N]) in extracts from Jurkat cells.



Immunohistochemistry (IHC) analyzes of Cofilin antibody (Cat.-No.: [AP20685PU-N]) in paraffin-embedded human breast carcinoma tissue.