

## Product datasheet for **AP20681PU-N**

### eNOS (NOS3) (1140-1190) Rabbit Polyclonal Antibody

#### Product data:

Product Type:	Primary Antibodies
Applications:	IF, IHC, WB
Recommended Dilution:	<b>Western blot:</b> 1/500 - 1/1000. <b>Immunohistochemistry on paraffin sections</b> 1/50 - 1/200. <b>Immunofluorescence:</b> 1/50 - 1/200.
Reactivity:	Human, Mouse, Rat
Host:	Rabbit
Clonality:	Polyclonal
Immunogen:	Synthetic peptide, corresponding to amino acids 1140-1190 of Human NOS3.
Specificity:	This antibody detects endogenous levels of NOS3 protein. (region surrounding Ser1170)
Formulation:	Phosphate buffered saline (PBS), pH 7.2 State: Aff - Purified State: Liquid purified Ig fraction Preservative: 0.05% sodium azide
Concentration:	1.0 mg/ml
Purification:	Affinity chromatography (> 95% (by SDS-PAGE)
Conjugation:	Unconjugated
Storage:	Store undiluted at 2-8°C for one month or (in aliquots) at -20°C for longer. Avoid repeated freezing and thawing.
Stability:	Shelf life: one year from despatch.
Predicted Protein Size:	~ 140 kDa
Gene Name:	nitric oxide synthase 3
Database Link:	<a href="#">Entrez Gene 18127 Mouse</a> <a href="#">Entrez Gene 24600 Rat</a> <a href="#">Entrez Gene 4846 Human P29474</a>



[View online »](#)

**Background:**

NOS is classified under three types: neuronal NOS (nNOS) or brain NOS (bNOS); inducible NOS (iNOS) or macrophage NOS (mNOS); and endothelial NOS (eNOS). eNOS is a calcium/calmodulin dependent enzyme which undergoes several post translational modifications, including acylation with myristate and palmitate, and phosphorylation on numerous residues. As with the other members of the NOS family, eNOS derives the diffusible multifunctional second messenger NO from L arginine through a series of reactions in which L citrulline is an intermediate. eNOS plays an important role in controlling vascular tone, platelet aggregation, and cardiac myocyte function.

**Synonyms:**

Endothelial NOS, EC-NOS, NOS type III, Constitutive NOS, eNOS

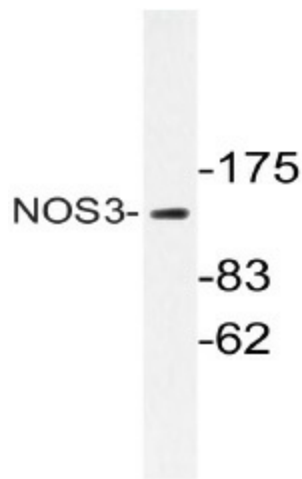
**Protein Families:**

Druggable Genome

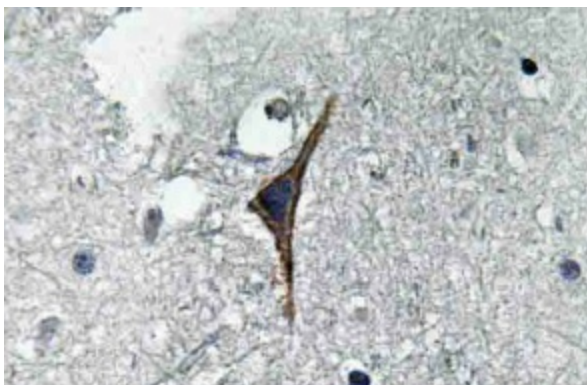
**Protein Pathways:**

Alzheimer's disease, Amyotrophic lateral sclerosis (ALS), Arginine and proline metabolism, Calcium signaling pathway, Long-term depression, Metabolic pathways, Pathways in cancer, Small cell lung cancer, VEGF signaling pathway

**Product images:**



Western blot (WB) analyzes of NOS3 antibody (Cat.-No.: AP20681PU-N) in extracts from Jurkat cells.



Immunohistochemistry (IHC) analyzes of NOS3 antibody (Cat.-No.: AP20681PU-N) in paraffin-embedded human brain tissue.