

## Product datasheet for **AP20680PU-M**

### Neurofilament (NEFM) Rabbit Polyclonal Antibody

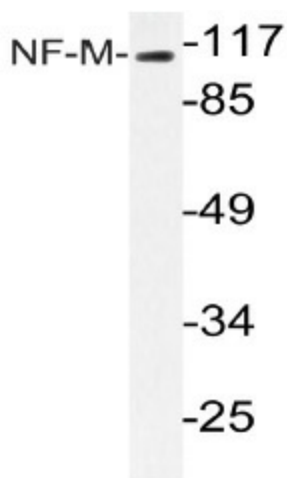
#### Product data:

Product Type:	Primary Antibodies
Applications:	WB
Recommended Dilution:	<b>Western blot:</b> 1/500 - 1/1000.
Reactivity:	Human
Host:	Rabbit
Clonality:	Polyclonal
Specificity:	This antibody detects endogenous levels of NF-M protein.
Formulation:	Phosphate buffered saline (PBS), pH 7.2. State: Aff - Purified State: Liquid purified Ig fraction Preservative: 0.05% sodium azide
Concentration:	1.0 mg/ml
Purification:	Affinity chromatography (> 95% (by SDS-PAGE)
Conjugation:	Unconjugated
Storage:	Store undiluted at 2-8°C for one month or (in aliquots) at -20°C for longer. Avoid repeated freezing and thawing.
Stability:	Shelf life: one year from despatch.
Predicted Protein Size:	~ 110 kDa
Gene Name:	neurofilament, medium polypeptide
Database Link:	<a href="#">Entrez Gene 4741 Human P07197</a>
Background:	Neurofilaments usually contain three intermediate filament proteins: L, M, and H which are involved in the maintenance of neuronal caliber. The extra mass and high charge density that distinguish the neurofilament proteins from all other intermediate filament proteins are due to the tailpiece extensions. This region may form a charged scaffolding structure suitable for interaction with other neuronal components or ions.
Synonyms:	Neurofilament medium polypeptide, NF-M, NEF3, NEFM, Neurofilament 3, (Neuronal Marker)



[View online »](#)

**Product images:**



Western blot (WB) analyzes of NF-M antibody (Cat.-No.: [AP20680PU-N]) in extracts from MCF-7 cells.