

Product datasheet for **AP20679PU-N**

Netrin 1 (NTN1) Rabbit Polyclonal Antibody

Product data:

Product Type:	Primary Antibodies
Applications:	IHC, WB
Recommended Dilution:	Western blot: 1/500-1/1000. Immunohistochemistry on Paraffin Sections: 1/50-1/200.
Reactivity:	Human, Mouse, Rat
Host:	Rabbit
Clonality:	Polyclonal
Specificity:	This antibody detects endogenous levels of Netrin-1 protein. (region surrounding Gln533)
Formulation:	Phosphate buffered saline (PBS), pH~7.2 State: Aff - Purified State: Liquid purified Ig fraction (> 95% (by SDS-PAGE) Preservative: 0.05% Sodium Azide
Concentration:	1.0 mg/ml
Purification:	Affinity Chromatography using epitope-specific immunogen
Conjugation:	Unconjugated
Storage:	Store undiluted at 2-8°C for one month or (in aliquots) at -20°C for longer. Avoid repeated freezing and thawing.
Stability:	Shelf life: one year from despatch.
Predicted Protein Size:	~68 kDa
Gene Name:	netrin 1
Database Link:	Entrez Gene 18208 Mouse Entrez Gene 114523 Rat Entrez Gene 9423 Human O95631



[View online »](#)

Background:

Netrin-G1 ligand (NGL1) is a transmembrane protein containing leucine-rich repeat (LRR) and immunoglobulin (Ig) domains that specifically interact with netrin-G1 through its LRR region. Whereas netrin-G1 is expressed highly in mouse thalamic axons, NGL1 is most abundant in the striatum and the cerebral cortex. NGL1 is implicated in facilitating axonal growth of the vertebrate CNS. Membrane-bound netrin-G1 acts as an axonal receptor, whereas the LRR-containing transmembrane protein NGL1 acts as a ligand in promoting the growth of thalamic axons.

Synonyms:

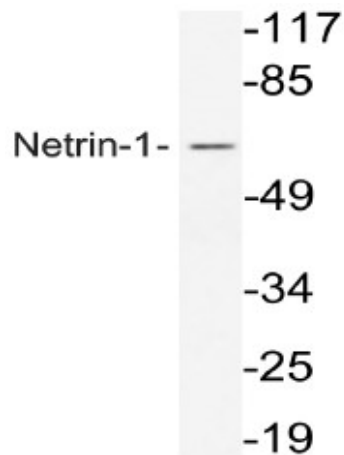
NTN1, NTN1L

Protein Families:

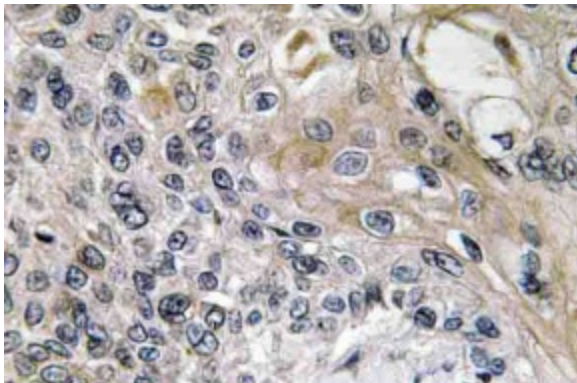
Druggable Genome, Secreted Protein, Transmembrane

Protein Pathways:

Axon guidance

Product images:


Western blot analysis of Netrin-1 antibody (Cat.-No AP20679PU-N) in extracts from COS7 cells.



Immunohistochemistry analysis of Netrin-1 antibody (Cat.-No AP20679PU-N) in paraffin-embedded human lung carcinoma tissue.