

## Product datasheet for **AP20676PU-M**

### HSF1 Rabbit Polyclonal Antibody

#### Product data:

Product Type:	Primary Antibodies
Applications:	IF, IHC, WB
Recommended Dilution:	<b>Western blot:</b> 1/500 - 1/1000. <b>Immunohistochemistry on paraffin sections</b> 1/50 - 1/200. <b>Immunofluorescence:</b> 1/50 - 1/200.
Reactivity:	Human, Mouse
Host:	Rabbit
Clonality:	Polyclonal
Specificity:	This antibody detects endogenous levels of HSF1 protein. (region surrounding Val297)
Formulation:	Phosphate buffered saline (PBS), pH 7.2. State: Aff - Purified State: Liquid purified Ig fraction Preservative: 0.05% sodium azide
Concentration:	1.0 mg/ml
Purification:	Affinity chromatography (> 95% (by SDS-PAGE)
Conjugation:	Unconjugated
Storage:	Store undiluted at 2-8°C for one month or (in aliquots) at -20°C for longer. Avoid repeated freezing and thawing.
Stability:	Shelf life: one year from despatch.
Predicted Protein Size:	~ 82 kDa
Gene Name:	heat shock transcription factor 1
Database Link:	<a href="#">Entrez Gene 15499 Mouse</a> <a href="#">Entrez Gene 3297 Human</a> <a href="#">Q00613</a>



[View online »](#)

## Background:

Prokaryotic and eukaryotic cells respond to thermal and chemical stress by inducing a group of genes collectively designated heat shock genes. In eukaryotes, this gene expression is regulated primarily at the transcription level. Heat shock transcription factors (HSF, also designated HSTF) 1 and 2 are involved in this regulation. HSF1 and HSF2 are upregulated by estrogen at both the mRNA and protein level. HSF1 is normally found as a monomer whose transcriptional activity is repressed by constitutive phosphorylation. Upon activation, HSF1 forms trimers, gains DNA binding activity and is translocated to the nucleus. HSF2 activity is associated with differentiation and development, and, like HSF1, binds DNA as a trimer. Both HSF1 and HSF2 are known to be induced by proteasome inhibitors of the ubiquitin pathway.

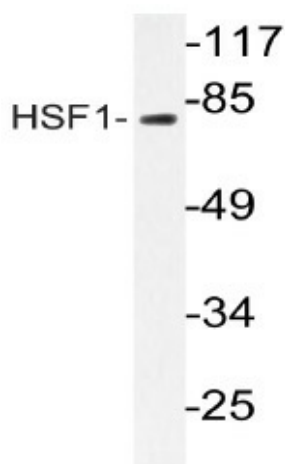
## Synonyms:

HSTF1, HSF-1

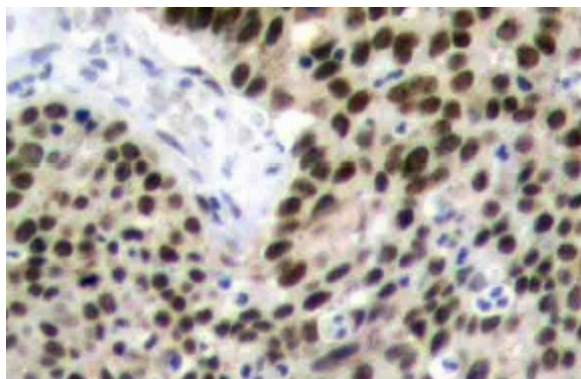
## Protein Families:

Transcription Factors

## Product images:



Western blot (WB) analyzes of HSF1 antibody (Cat.-No.: [AP20676PU-N]) in extracts from RAW264.7 cells.



Immunohistochemistry (IHC) analyzes of HSF1 antibody (Cat.-No.: [AP20676PU-N]) in paraffin-embedded human breast carcinoma tissue.