

## Product datasheet for **AP20675PU-M**

### NGF Rabbit Polyclonal Antibody

#### Product data:

Product Type:	Primary Antibodies
Applications:	IHC, WB
Recommended Dilution:	<b>Western blot:</b> 1/500 - 1/1000. <b>Immunohistochemistry on Paraffin Sections:</b> 1/50-1/200.
Reactivity:	Human, Mouse, Rat
Host:	Rabbit
Clonality:	Polyclonal
Specificity:	This antibody detects endogenous levels of NGF protein. (region surrounding Leu82)
Formulation:	Phosphate buffered saline (PBS), pH~7.2 State: Aff - Purified State: Liquid purified Ig fraction (> 95% pure by SDS-PAGE) Preservative: 0.05% Sodium Azide
Concentration:	1.0 mg/ml
Purification:	Affinity Chromatography using epitope-specific immunogen
Conjugation:	Unconjugated
Storage:	Store undiluted at 2-8°C for one month or (in aliquots) at -20°C for longer. Avoid repeated freezing and thawing.
Stability:	Shelf life: one year from despatch.
Predicted Protein Size:	~27 kDa
Gene Name:	nerve growth factor
Database Link:	<u><a href="#">Entrez Gene 18049 Mouse</a></u> <u><a href="#">Entrez Gene 310738 Rat</a></u> <u><a href="#">Entrez Gene 4803 Human</a></u> <u><a href="#">P01138</a></u>



[View online »](#)

**Background:**

The prototype neurotrophin is nerve growth factor (NGF), originally discovered in the 1950s as a soluble peptide promoting the survival of, and neurite outgrowth from, sympathetic ganglia. Three additional structurally homologous neurotrophic factors have been identified. These include brain-derived neurotrophic factor (BDNF), neurotrophin-3 (NT-3) and neurotrophin-4 (NT-4) (also designated NT-5). These various neurotrophins stimulate the in vitro survival of distinct, but partially overlapping, populations of neurons. The cell surface receptors through which neurotrophins mediate their activity have been identified. For instance, the Trk A receptor is the preferential receptor for NGF, but also binds NT-3 and NT-4.

**Synonyms:**

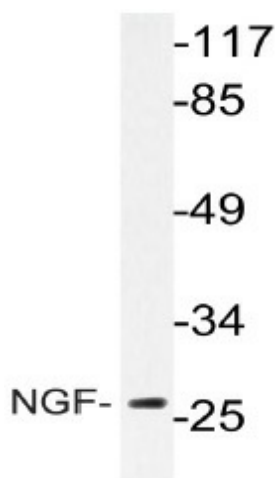
Beta-NGF, NGFB, Beta-nerve growth factor

**Protein Families:**

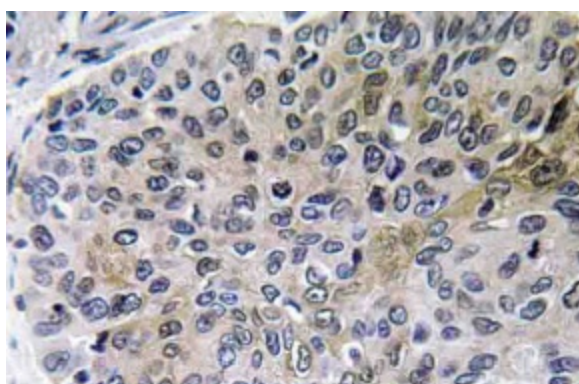
Druggable Genome, Secreted Protein

**Protein Pathways:**

Apoptosis, MAPK signaling pathway, Neurotrophin signaling pathway

**Product images:**


Western blot analysis of NGF Antibody (Cat.-No [AP20675PU-N]) in extracts from Jurkat cells.



Immunohistochemistry analysis of NGF Antibody (Cat.-No [AP20675PU-N]) in paraffin-embedded human lung carcinoma tissue.