

## Product datasheet for **AP20674PU-N**

### **GABA A Receptor alpha 1 (GABRA1) Rabbit Polyclonal Antibody**

#### **Product data:**

Product Type:	Primary Antibodies
Applications:	IHC
Recommended Dilution:	<b>Immunohistochemistry on paraffin sections:</b> 1/50 - 1/200.
Reactivity:	Human, Mouse, Rat
Host:	Rabbit
Clonality:	Polyclonal
Specificity:	This antibody detects endogenous levels of GABAA Ralpha1 protein. (region surrounding Leu361)
Formulation:	Phosphate buffered saline (PBS), pH 7.2 State: Aff - Purified State: Liquid purified Ig fraction Preservative: 0.05% sodium azide
Concentration:	1.0 mg/ml
Purification:	Affinity chromatography (> 95% (by SDS-PAGE)
Conjugation:	Unconjugated
Storage:	Store undiluted at 2-8°C for one month or (in aliquots) at -20°C for longer. Avoid repeated freezing and thawing.
Stability:	Shelf life: one year from despatch.
Gene Name:	gamma-aminobutyric acid type A receptor alpha1 subunit
Database Link:	<u><a href="#">Entrez Gene 14394 Mouse</a></u> <u><a href="#">Entrez Gene 29705 Rat</a></u> <u><a href="#">Entrez Gene 2554 Human P14867</a></u>



[View online »](#)

**Background:**

GAD-65 and GAD-67, glutamate decarboxylases of 65 and 67 kDa, respectively, function to catalyze the production of GABA (gamma-aminobutyric acid). In the central nervous system GABA functions as the main inhibitory transmitter by increasing a Cl<sup>-</sup> conductance that inhibits neuronal firing. GABA has been shown to activate both ionotropic (GABAA) and metabotropic (GABAB) receptors as well as a third class of receptors called GABAC. Both GABAA and GABAC are ligand-gated ion channels, however, they are structurally and functionally distinct. Members of the GABAA receptor family include GABAA Ralpha1-6, GABAA Rbeta1-3, GABAA Repsilon, GABAA Rdelta, GABAA Rgamma1-3, GABAA Rrho1 and GABAA Rrho2. The GABAB family is composed of GABAB R1alpha and GABAB R1beta. GABA transporters have also been identified and include GABA T-1, GABA T-2 and GABA T-3 (also designated GAT-1, -2 and -3). The GABA transporters function to terminate GABA action.

**Synonyms:**

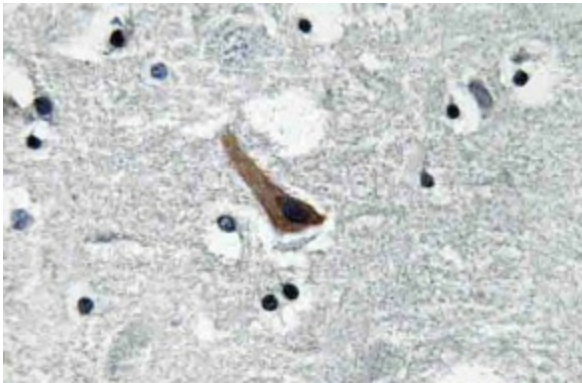
GABRA-1, GABA A receptor subunit alpha-1

**Protein Families:**

Druggable Genome, Ion Channels: Cys-loop Receptors, Transmembrane

**Protein Pathways:**

Neuroactive ligand-receptor interaction

**Product images:**

Immunohistochemistry (IHC) analyzes of GABAA Ralpha1 antibody (Cat.-No.: AP20674PU-N) in paraffin-embedded human brain tissue.