

Product datasheet for **AP20671PU-N**

IL11 Rabbit Polyclonal Antibody

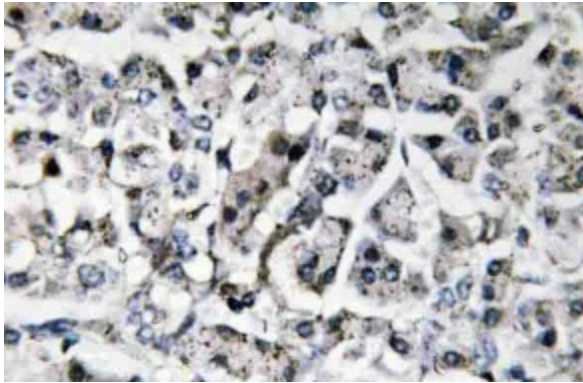
Product data:

Product Type:	Primary Antibodies
Applications:	IHC, WB
Recommended Dilution:	Immunohistochemistry on Paraffin Sections: 1/50-1/200. Western Blot: 1/500-1/1000.
Reactivity:	Human, Mouse, Rat
Host:	Rabbit
Clonality:	Polyclonal
Specificity:	This antibody detects endogenous levels of IL-11 protein (region surrounding Gly27).
Formulation:	Phosphate buffered saline (PBS), pH~7.2 State: Aff - Purified State: Liquid purified IgG fraction (> 95% (by SDS-PAGE). Preservative: 0.05% Sodium Azide
Concentration:	1.0 mg/ml
Purification:	Affinity-chromatography using epitope-specific immunogen.
Conjugation:	Unconjugated
Storage:	Store undiluted at 2-8°C for one month or (in aliquots) at -20°C for longer. Avoid repeated freezing and thawing.
Stability:	Shelf life: one year from despatch.
Gene Name:	interleukin 11
Database Link:	Entrez Gene 3589 Human P20809



[View online »](#)

Background:	Interleukin 11 is a pleiotropic cytokine produced by mesenchymal-derived adherent cells. IL11 shares many functions of IL6 and LIF, including potentiation of megakaryocyte activity, enhancement of human myeloma cell proliferation, and enhancement of hepatic acute phase protein production. Interleukin 11 directly stimulates the proliferation of hematopoietic stem cells and megakaryocyte progenitor cells, and induces megakaryocyte maturation resulting in increased platelet production. Clinically it is used to prevent severe thrombocytopenia and the reduction of the need for platelet transfusion following myelosuppressive chemotherapy.
Synonyms:	IL-11, Adipogenesis inhibitory factor, AGIF
Protein Families:	Druggable Genome, Secreted Protein
Protein Pathways:	Cytokine-cytokine receptor interaction, Hematopoietic cell lineage, Jak-STAT signaling pathway

Product images:

Immunohistochemistry (IHC) analyzes of IL-11 antibody (Cat.-No.: AP20671PU-N) in paraffin-embedded human pancreas tissue.