

Product datasheet for **AP20670PU-M**

PAX2 Rabbit Polyclonal Antibody

Product data:

Product Type:	Primary Antibodies
Applications:	WB
Recommended Dilution:	Western blot: 1/500 - 1/1000. Immunohistochemistry on paraffin sections: 1/50-1/200.
Reactivity:	Human, Mouse, Rat
Host:	Rabbit
Clonality:	Polyclonal
Specificity:	This antibody detects endogenous levels of Pax-2 protein. (region surrounding Ile193)
Formulation:	Phosphate buffered saline (PBS), pH 7.2. State: Aff - Purified State: Liquid purified Ig fraction Preservative: 15 mM sodium azide
Concentration:	1.0 mg/ml
Purification:	Affinity chromatography (> 95% (by SDS-PAGE)
Conjugation:	Unconjugated
Storage:	Store undiluted at 2-8°C for one month or (in aliquots) at -20°C for longer. Avoid repeated freezing and thawing.
Stability:	Shelf life: one year from despatch.
Predicted Protein Size:	~ 40 kDa
Gene Name:	paired box 2
Database Link:	<u>Entrez Gene 18504 Mouse</u> <u>Entrez Gene 293992 Rat</u> <u>Entrez Gene 5076 Human</u> <u>Q02962</u>



[View online »](#)

Background:

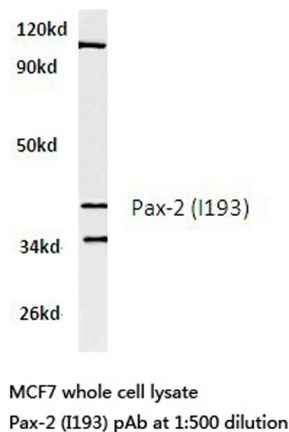
Pax genes contain paired domains with strong homology to genes in *Drosophila* which are involved in programming early development. The Pax-2 gene is expressed in primitive cells of the kidney, ureter, eye, ear, and central nervous system. More specifically, in human embryo sections, PAX2 is expressed in the optic vesicle and later in the retina, in the otic vesicle and later in the semicircular canals of the inner ear, and in mesonephros, metanephros, adrenals, spinal cord and hindbrain. PAX2 mutations can be responsible for renal hypoplasia, either isolated or associated with various ophthalmologic manifestations ranging from retinal coloboma to microphthalmia. Lesions in the PAX6 gene account for most cases of aniridia, a congenital malformation of the eye, chiefly characterized by iris hypoplasia, which can cause blindness. PAX6 is involved in other anterior segment malformations besides aniridia, such as Peters' anomaly, a major error in the embryonic development of the eye with corneal clouding with variable iridolenticulocorneal adhesions.

Synonyms:

Pax-2

Protein Families:

Druggable Genome

Product images:


Western blot (WB) analysis of Pax-2 antibody (Cat.-No.: [AP20670PU-N]) in extracts from MCF7 cells.