

## Product datasheet for **AP20669PU-M**

### SLC22A6 Rabbit Polyclonal Antibody

#### Product data:

Product Type:	Primary Antibodies
Applications:	IHC, WB
Recommended Dilution:	<b>Western blot:</b> 1/500-1/1000. <b>Immunohistochemistry on Paraffin Sections:</b> 1/50-1/200.
Reactivity:	Human, Mouse, Rat
Host:	Rabbit
Clonality:	Polyclonal
Immunogen:	Synthetic peptide corresponding to amino acids 271-320 of Human OAT1.
Specificity:	This antibody detects endogenous levels of OAT1 protein. (region surrounding Leu304).
Formulation:	Phosphate buffered saline (PBS), pH 7.2 State: Aff - Purified State: Liquid purified Ig fraction Preservative: 15 mM Sodium Azide
Concentration:	1.0 mg/ml
Purification:	Affinity Chromatography (> 95% (by SDS-PAGE)
Conjugation:	Unconjugated
Storage:	Store undiluted at 2-8°C for one month or (in aliquots) at -20°C for longer. Avoid repeated freezing and thawing.
Stability:	Shelf life: one year from despatch.
Predicted Protein Size:	~ 65 kDa
Gene Name:	solute carrier family 22 member 6
Database Link:	<a href="#">Entrez Gene 18399 Mouse</a> <a href="#">Entrez Gene 29509 Rat</a> <a href="#">Entrez Gene 9356 Human</a> <a href="#">Q4U2R8</a>



[View online »](#)

**Background:**

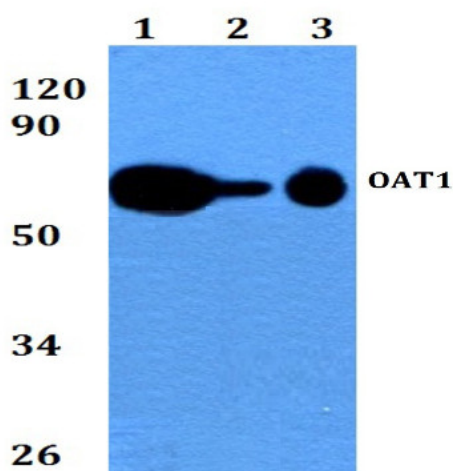
OAT1 (organic anion transporter 1), a 563 amino acid protein, and OAT3 (organic anion transporter 3), a 542 amino acid protein, are two members of the OAT family and are highly expressed in kidneys. Localized specifically to the basolateral membrane, OAT1 and OAT3 are involved in the elimination of toxic organic anions, such as benzylpenicillin and cimetidine, from proximal renal tubules. Via their ability to remove anions from renal tissues, OAT1 and OAT3 are able to regulate the amount of toxins within the kidneys. Additionally, OAT1 functions as an organic anion exchanger that couples the uptake of one organic anion molecule with the efflux of one endogenous dicarboxylic acid molecule, such as ketoglutarate.

**Synonyms:**

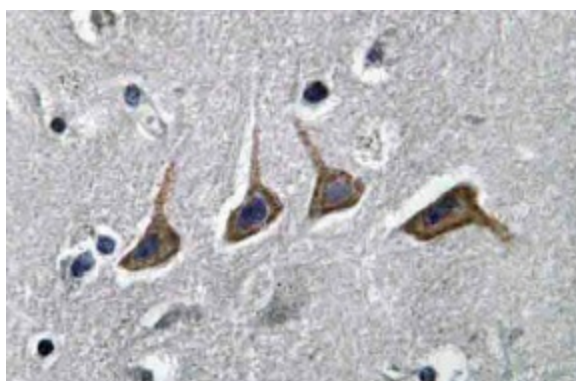
Organic anion transporter 1, ROAT, PAHT

**Protein Families:**

Transmembrane

**Product images:**


Western blot analysis of SLC22A6 / OAT1 Antibody at 1/500 dilution. Lane 1: HEK293T whole cell lysate. Lane 2: Raw264.7 whole cell lysate. Lane 3: H9C2 whole cell lysate.



Immunohistochemistry analyzes of SLC22A6 / OAT1 Antibody in paraffin-embedded human brain tissue.