

Product datasheet for **AP20666PU-M**

Annexin A2 (ANXA2) Rabbit Polyclonal Antibody

Product data:

Product Type:	Primary Antibodies
Applications:	IHC, WB
Recommended Dilution:	Western blot: 1/500 - 1/1000. Immunohistochemistry on paraffin sections 1/50 - 1/200.
Reactivity:	Human, Mouse, Rat
Host:	Rabbit
Clonality:	Polyclonal
Immunogen:	Synthetic peptide, corresponding to amino acids 111-160 of Human Annexin 2.
Specificity:	This antibody detects endogenous levels of Annexin II protein. (region surrounding asn137)
Formulation:	Phosphate buffered saline (PBS), pH 7.2. State: Aff - Purified State: Liquid purified Ig fraction Preservative: 0.05% sodium azide
Concentration:	1.0 mg/ml
Purification:	Affinity chromatography (> 95% (by SDS-PAGE)
Conjugation:	Unconjugated
Storage:	Store undiluted at 2-8°C for one month or (in aliquots) at -20°C for longer. Avoid repeated freezing and thawing.
Stability:	Shelf life: one year from despatch.
Predicted Protein Size:	~ 38 kDa
Gene Name:	annexin A2
Database Link:	<u>Entrez Gene 12306 Mouse</u> <u>Entrez Gene 56611 Rat</u> <u>Entrez Gene 302 Human</u> <u>P07355</u>



[View online »](#)

Background:

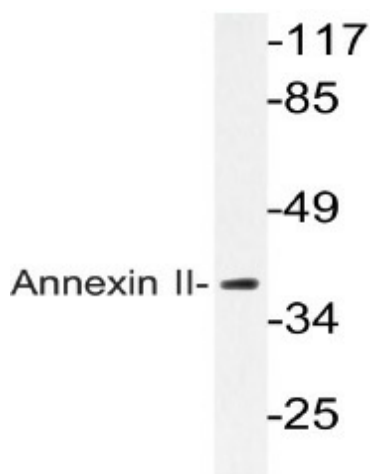
The Annexin family of calcium-binding proteins is composed of at least ten mammalian genes and is characterized by a conserved core domain which binds phospholipids in a Ca^{2+} -dependent manner and a unique amino-terminal region which may confer binding specificity. The interaction between these proteins and biological membranes has led to the hypothesis that they are involved in cellular trafficking processes such as endocytosis, exocytosis and cellular adhesion. Annexin I, alternatively referred to as lipocortin, has been implicated as a mediator of the anti-inflammatory response produced by glucocorticoids and as an inhibitor of cPLA2, a potent mediator of inflammation. Annexin II, also called p36, exists as a monomer or as a heterotetramer, complexed with the S-100-related protein p11. This complex is termed calpactin I. In the tetrameric form, Annexin II is an efficient substrate of PKC family and Src pp60.

Synonyms:

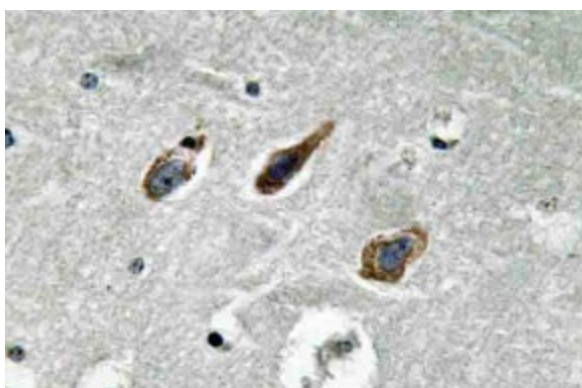
ANX2, ANX2L4, CAL1H, LPC2D, Annexin-2, Annexin II, Lipocortin II, Calpactin I heavy chain, Chromobindin-8, p36, Protein I

Protein Families:

Druggable Genome, Secreted Protein, Stem cell - Pluripotency

Product images:


Western blot (WB) analysis of Annexin II antibody in extracts from HeLa cells.



Immunohistochemistry (IHC) analyzes of Annexin II antibody in paraffin-embedded human brain tissue.