

Product datasheet for **AP20664PU-M**

Neuropeptide Y (NPY) Rabbit Polyclonal Antibody

Product data:

Product Type:	Primary Antibodies
Applications:	IHC
Recommended Dilution:	Immunohistochemistry on paraffin sections 1/50 - 1/200.
Reactivity:	Human, Mouse, Rat
Host:	Rabbit
Clonality:	Polyclonal
Specificity:	This antibody detects endogenous levels of NPY protein. (region surrounding Pro94)
Formulation:	Phosphate buffered saline (PBS), pH 7.2. State: Aff - Purified State: Liquid purified Ig fraction Preservative: 0.05% sodium azide
Concentration:	1.0 mg/ml
Purification:	Affinity chromatography (> 95% (by SDS-PAGE)
Conjugation:	Unconjugated
Storage:	Store undiluted at 2-8°C for one month or (in aliquots) at -20°C for longer. Avoid repeated freezing and thawing.
Stability:	Shelf life: one year from despatch.
Predicted Protein Size:	~ 11 kDa
Gene Name:	neuropeptide Y
Database Link:	<u>Entrez Gene 24604 Rat</u> <u>Entrez Gene 109648 Mouse</u> <u>Entrez Gene 4852 Human</u> <u>P01303</u>



[View online »](#)

Background:

A gene located on chromosome 7p15.1 encodes a 36-amino acid protein designated NPY (Neuropeptide Y). NPY consists of a polyproline stretch followed by an amphipathic alpha-helix. NPY shares a 50% amino acid homology with pancreatic polypeptide gene (PP). The NPY hormone family consists of NPY, PP and peptide YY. NPY is expressed throughout the central and peripheral nervous system, particularly in the deep layers of the cortex and smaller cell bodies in the white matter. NPY interacts with the Y-receptor family of G-protein coupled receptors. NPY interacts with NPY receptor Y1 to increase corticotropin levels and decrease noradrenaline levels in the hypothalamus. Through interactions in the hypothalamus, NPY plays important roles in the regulation of energy balance by stimulating food intake. NPY favors energy storage by increasing lipoprotein lipase activity in white adipose tissue. A leucine(7)-to-proline(7) polymorphism has been implicated in an increase in alcohol preference, and decrease in cholesterol metabolism.

Synonyms:

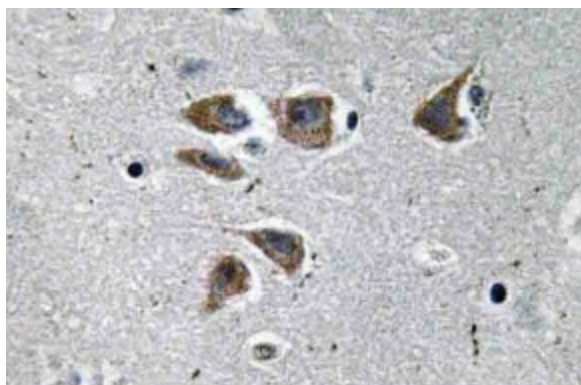
OTTHUMP00000201946; OTTHUMP00000201947; PYY4

Protein Families:

Druggable Genome, Secreted Protein, Transmembrane

Protein Pathways:

Adipocytokine signaling pathway

Product images:


Immunohistochemistry (IHC) analyzes of NPY antibody (Cat.-No.: [AP20664PU-N]) in paraffin-embedded human brain tissue.