

Product datasheet for **AP20663PU-M**

Apolipoprotein E (APOE) Rabbit Polyclonal Antibody

Product data:

Product Type:	Primary Antibodies
Applications:	IHC, WB
Recommended Dilution:	Western Blot: 1/500-1/1000. Immunohistochemistry on Paraffin Sections: 1/50-1/200.
Reactivity:	Human, Mouse, Rat
Host:	Rabbit
Clonality:	Polyclonal
Specificity:	This antibody detects endogenous levels of ApoE protein. (region surrounding Met86)
Formulation:	Phosphate buffered saline (PBS), pH~7.2 State: Aff - Purified State: Liquid purified Ig fraction (> 95% pure by SDS-PAGE) Preservative: 0.05% Sodium Azide
Concentration:	1.0 mg/ml
Purification:	Affinity Chromatography using epitope-specific immunogen
Conjugation:	Unconjugated
Storage:	Store undiluted at 2-8°C for one month or (in aliquots) at -20°C for longer. Avoid repeated freezing and thawing.
Stability:	Shelf life: one year from despatch.
Predicted Protein Size:	~ 32 kDa
Gene Name:	apolipoprotein E
Database Link:	<u>Entrez Gene 11816 Mouse</u> <u>Entrez Gene 25728 Rat</u> <u>Entrez Gene 348 Human</u> <u>P02649</u>



[View online »](#)

Background:

Apolipoprotein-E (apoE) is a protein component of plasma lipoproteins that mediates the binding, internalization and catabolism of lipoprotein particles. It can serve as a ligand for several lipoprotein receptors, including the LDL (apoB/E) receptor and the hepatic apoE (chylomicron remnant) receptor. apoE is produced in most organs and occurs in all plasma lipoprotein fractions, constituting 10-20% of VLDL (very low density lipoprotein) and 1-2% of HDL (high density lipoprotein). Three major isoforms of apoE have been described in human (E2, E3 and E4) which differ by one to two amino acids. Estrogen receptor has been shown to upregulate apoE gene expression via the ER-mediated pathway, indicating a potential role for apoE in atherosclerosis. This is consistent with studies in mice in which plasma apoE levels were raised, thereby protecting the mice from diet-induced atherosclerosis. apoE has also been shown to be a potent inhibitor of proliferation and thus may play a role in angiogenesis, tumor cell growth and metastasis.

Synonyms:

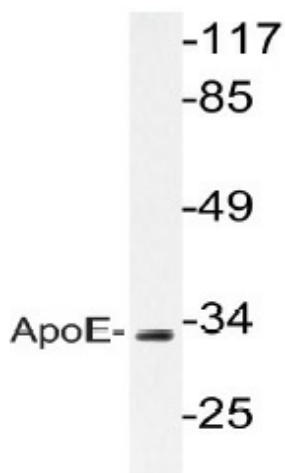
ApoE, Apo-E

Protein Families:

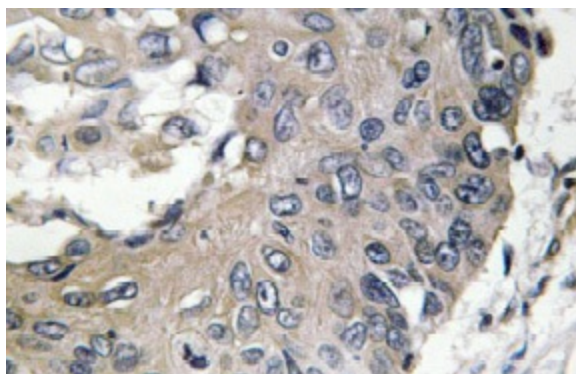
Adult stem cells, Druggable Genome, Secreted Protein, Stem cell - Pluripotency

Protein Pathways:

Alzheimer's disease

Product images:


Western blot analysis of ApoE Antibody (Cat.-No [AP20663PU-N]) in extracts from RAW264.7 cells.



Immunohistochemistry analysis of ApoE Antibody (Cat.-No [AP20663PU-N]) in paraffin-embedded human lung carcinoma tissue.