

Product datasheet for **AP20662PU-M**

EGF Rabbit Polyclonal Antibody

Product data:

Product Type:	Primary Antibodies
Applications:	IHC, WB
Recommended Dilution:	Immunohistochemistry on paraffin embedded tissue: 1/50 - 1/200. Western blot: 1/500 - 1/1000.
Reactivity:	Human, Mouse, Rat
Host:	Rabbit
Clonality:	Polyclonal
Specificity:	This antibody detects endogenous levels of EGF protein. (region surrounding Arg709)
Formulation:	Phosphate buffered saline (PBS), pH 7.2. State: Aff - Purified State: Liquid purified Ig fraction Preservative: 0.05% sodium azide
Concentration:	1.0 mg/ml
Purification:	Affinity chromatography using epitope-specific immunogen (> 95% (by SDS-PAGE)
Conjugation:	Unconjugated
Storage:	Store undiluted at 2-8°C for one month or (in aliquots) at -20°C for longer. Avoid repeated freezing and thawing.
Stability:	Shelf life: one year from despatch.
Predicted Protein Size:	~ 130 kDa
Gene Name:	epidermal growth factor
Database Link:	<u>Entrez Gene 13645 Mouse</u> <u>Entrez Gene 25313 Rat</u> <u>Entrez Gene 1950 Human</u> <u>P01133</u>



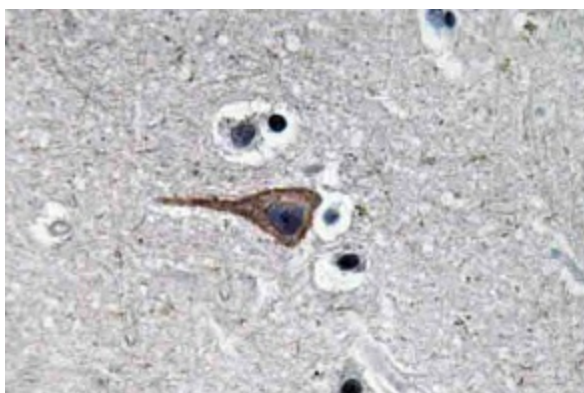
[View online »](#)

Background:	Epidermal growth factor (EGF) is an acid- and heat-stable 53 amino acid protein of 6 kDa originally found in rodents and humans. EGF has been shown to be a potent mitogen for a variety of cell types both in vivo and in vitro. It binds to the 170 kDa EGF receptor on the surface of cells and mediates intrinsic phosphorylation of the receptor on tyrosine residues. EGF has been detected in nearly all body fluids such as urine (urogastrone), saliva, milk and platelet-rich plasma. EGF, TGF α and vaccinia virus growth factor exhibit 30-40% amino acid homology. Several additional members of the EGF/TGF family have been described; these include Cripto, Amphiregulin and the heparin-binding EGF-like growth factor, each of which, except Cripto, binds to the EGF receptor.
Synonyms:	Urogastrone, Epidermal growth factor, URG, HOMG4
Protein Families:	Adult stem cells, Druggable Genome, Embryonic stem cells, ES Cell Differentiation/IPS, Induced pluripotent stem cells, Transmembrane
Protein Pathways:	Bladder cancer, Cytokine-cytokine receptor interaction, Endocytosis, Endometrial cancer, ErbB signaling pathway, Focal adhesion, Gap junction, Glioma, MAPK signaling pathway, Melanoma, Non-small cell lung cancer, Pancreatic cancer, Pathways in cancer, Prostate cancer, Regulation of actin cytoskeleton

Product images:



Western blot analysis of EGF in extracts from NIH-3T3 cells using anti-EGF antibody (Cat.-No.: [AP20662PU-N])



Immunohistochemistry (IHC) analysis of EGF antibody (Cat.-No.: [AP20662PU-N]) in paraffin-embedded human brain tissue.