

Product datasheet for **AP20661PU-N**

CD3D Rabbit Polyclonal Antibody

Product data:

Product Type:	Primary Antibodies
Applications:	WB
Recommended Dilution:	Western blot: 1/500-1/1000.
Reactivity:	Human
Host:	Rabbit
Clonality:	Polyclonal
Immunogen:	Synthetic peptide, corresponding to amino acids 21-70 of Human CD3- δ
Specificity:	This antibody detects endogenous levels of CD3- δ protein. (region surrounding Thr56)
Formulation:	Phosphate buffered saline (PBS), pH 7.2 State: Aff - Purified State: Liquid purified Ig fraction (> 95% pure by SDS-PAGE) Preservative: 0.05% Sodium Azide
Concentration:	1.0 mg/ml
Purification:	Affinity Chromatography using epitope-specific immunogen
Conjugation:	Unconjugated
Storage:	Store undiluted at 2-8°C for one month or (in aliquots) at -20°C for longer. Avoid repeated freezing and thawing.
Stability:	Shelf life: one year from despatch.
Predicted Protein Size:	~ 24 kDa
Gene Name:	CD3d molecule
Database Link:	Entrez Gene 915 Human P04234



[View online »](#)

Background:

The CD3 complex mediates signal transduction. Defects in CD3D are a cause of severe combined immunodeficiency autosomal recessive T-cell-negative/B-cell-positive/NK-cell-positive (T-B+NK+ SCID) [MIM:608971]. A form of severe combined immunodeficiency (SCID), a genetically and clinically heterogeneous group of rare congenital disorders characterized by impairment of both humoral and cell-mediated immunity, leukopenia, and low or absent antibody levels. Patients present in infancy recurrent, persistent infections by opportunistic organisms. The common characteristic of all types of SCID is absence of T-cell-mediated cellular immunity due to a defect in T-cell development.

Synonyms:

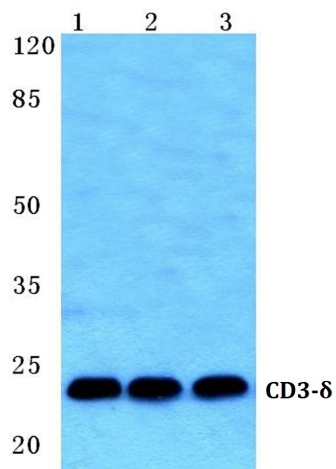
CD3D, T3D

Protein Families:

Druggable Genome

Protein Pathways:

Hematopoietic cell lineage, Primary immunodeficiency, T cell receptor signaling pathway

Product images:

Western blot (WB) analysis of CD3D antibody (Cat.-No.: AP20661PU-N) at 1/500 dilution. Lane 1: HEK293T whole cell lysate, Lane 2: NIH-3T3 whole cell lysate, Lane 3: PC12 whole cell lysate.