

## Product datasheet for **AP20659PU-M**

### Insulin (INS) Rabbit Polyclonal Antibody

#### Product data:

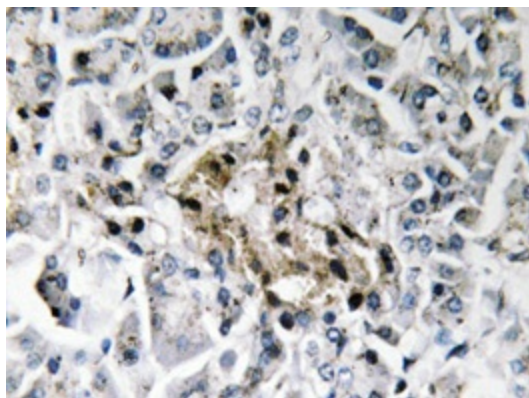
Product Type:	Primary Antibodies
Applications:	IHC, WB
Recommended Dilution:	<b>Immunohistochemistry on Paraffin Sections:</b> 1/50-1/200. WB:1/500-1/2000.
Reactivity:	Human, Mouse, Rat
Host:	Rabbit
Clonality:	Polyclonal
Specificity:	This antibody detects endogenous levels of Insulin protein. (region surrounding Phe49)
Formulation:	Phosphate buffered saline (PBS), pH~7.2 State: Aff - Purified State: Liquid purified Ig fraction (> 95% by SDS-PAGE) Preservative: 0.05% Sodium Azide
Concentration:	1.0 mg/ml
Purification:	Affinity Chromatography using epitope-specific immunogen
Conjugation:	Unconjugated
Storage:	Store undiluted at 2-8°C for one month or (in aliquots) at -20°C for longer. Avoid repeated freezing and thawing.
Stability:	Shelf life: one year from despatch.
Predicted Protein Size:	~ 12 kDa
Gene Name:	insulin
Database Link:	<a href="#">Entrez Gene 3630 Human P01308</a>



[View online »](#)

<b>Background:</b>	Insulin is one of the major regulatory hormones of intermediate metabolism throughout the body. The biological actions of this hormone involve integration of carbohydrate, protein, and lipid metabolism. Insulin enhances membrane transport of glucose, amino acids, and certain ions. It also promotes glycogen storage, formation of triglycerides and synthesis of proteins and nucleic acids. Immunocytochemical investigations have localized insulin in the B cells of pancreatic islets of Langerhans. Deficiency of insulin results in diabetes mellitus, one of the leading causes of morbidity and mortality in the general population. Insulin is also present in tumors of B cell origin such as insulinoma.
<b>Synonyms:</b>	INS
<b>Protein Families:</b>	Druggable Genome, ES Cell Differentiation/IPS, Secreted Protein
<b>Protein Pathways:</b>	Insulin signaling pathway, Maturity onset diabetes of the young, mTOR signaling pathway, Oocyte meiosis, Progesterone-mediated oocyte maturation, Prostate cancer, Regulation of actin cytoskeleton, Regulation of autophagy, Type I diabetes mellitus, Type II diabetes mellitus

### Product images:



Immunohistochemistry analysis of Insulin Antibody (Cat.-No [AP20659PU-N]) in paraffin-embedded human pancreas tissue.