

Product datasheet for **AP20657PU-N**

IL2 Rabbit Polyclonal Antibody

Product data:

Product Type:	Primary Antibodies
Applications:	WB
Recommended Dilution:	Western blot: 1/500 - 1/1000.
Reactivity:	Human, Rat
Host:	Rabbit
Clonality:	Polyclonal
Specificity:	This antibody detects endogenous levels of IL-2 protein. (region surrounding Tyr65)
Formulation:	Phosphate buffered saline (PBS), pH 7.2 State: Aff - Purified State: Liquid purified Ig fraction Preservative: 0.05% sodium azide
Concentration:	1.0 mg/ml
Purification:	Affinity-chromatography using epitope-specific immunogen; purity is > 95% (by SDS-PAGE)
Conjugation:	Unconjugated
Storage:	Store undiluted at 2-8°C for one month or (in aliquots) at -20°C for longer. Avoid repeated freezing and thawing.
Stability:	Shelf life: one year from despatch.
Predicted Protein Size:	~ 24 kDa
Gene Name:	interleukin 2
Database Link:	Entrez Gene 116562 Rat Entrez Gene 3558 Human P60568



[View online »](#)

Background:

Human interleukin 2 (IL2) is a secreted cytokine that is important for the proliferation of T and B lymphocytes. The receptor of this cytokine is a heterotrimeric protein complex whose gamma chain is also shared by interleukin 4 (IL4) and interleukin 7 (IL7). The expression of this gene in mature thymocytes is monoallelic, which represents an unusual regulatory mode for controlling the precise expression of a single gene. The targeted disruption of a similar gene in mice leads to ulcerative colitis like disease, which suggests an essential role of this gene in the immune response to antigenic stimuli. IL2 has been shown to have antitumor effects in some studies. This is probably mediated by cytotoxic effector cells.

Synonyms:

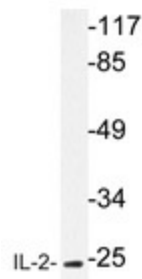
IL-2, TCGF

Protein Families:

Druggable Genome, Secreted Protein

Protein Pathways:

Allograft rejection, Autoimmune thyroid disease, Cytokine-cytokine receptor interaction, Graft-versus-host disease, Jak-STAT signaling pathway, T cell receptor signaling pathway, Type I diabetes mellitus

Product images:

Western blot analysis of IL-2 antibody (Cat.-No.: AP20657PU-N) in extracts from HT-29 cells.