

Product datasheet for **AP20656PU-N**

CCL3 Rabbit Polyclonal Antibody

Product data:

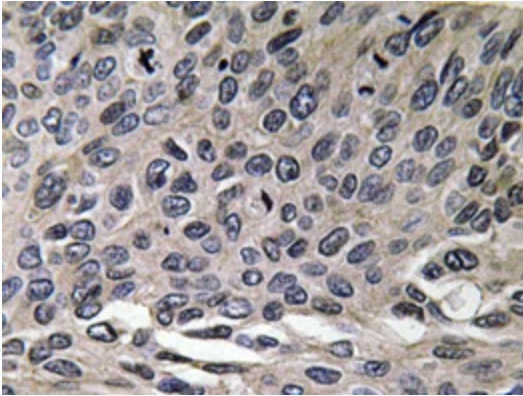
Product Type:	Primary Antibodies
Applications:	IHC
Recommended Dilution:	Immunohistochemistry on paraffin sections: 1/50 - 1/200.
Reactivity:	Human
Host:	Rabbit
Clonality:	Polyclonal
Specificity:	This antibody detects endogenous levels of MIP-1 α protein. (region surrounding Asp75)
Formulation:	Phosphate buffered saline (PBS), pH 7.2 State: Aff - Purified State: Liquid purified Ig fraction Preservative: 0.05% sodium azide
Concentration:	1.0 mg/ml
Purification:	Affinity-chromatography using epitope-specific immunogen; purity is > 95% (by SDS-PAGE)
Conjugation:	Unconjugated
Storage:	Store undiluted at 2-8°C for one month or (in aliquots) at -20°C for longer. Avoid repeated freezing and thawing.
Stability:	Shelf life: one year from despatch.
Gene Name:	C-C motif chemokine ligand 3
Database Link:	Entrez Gene 6348 Human P10147



[View online »](#)

- Background:** Macrophage Inflammatory Protein 1 alpha (MIP1 alpha) and MIP1 beta, two closely related but distinct proteins, were originally co-purified from medium conditioned by a LPS-stimulated murine macrophage cell line. Mature mouse MIP1 alpha shares approximately 77% and 70% amino acid identity with human MIP1 alpha and mouse MIP1 beta, respectively. MIP1 proteins are expressed primarily in T cells, B cells, and monocytes after antigen or mitogen stimulation. Has adhesive effects on lymphocytes. MIP1 alpha can inhibit the proliferation of hematopoietic stem cells in vitro as well as in vivo. A signal transducing receptor, designated the C-C chemokine receptor-1 (C-C CKR-1) with seven transmembrane domains that bind MIP1 alpha, MIP1 beta, MCP1 and RANTES with varying affinities, has been isolated.
- Synonyms:** CCL-3, MIP-1-alpha, C-C motif chemokine 3, MIP1A, Small-inducible cytokine A3, SCYA3, LD78 alpha, G0S19-1 protein
- Protein Families:** Druggable Genome, Secreted Protein
- Protein Pathways:** Chemokine signaling pathway, Cytokine-cytokine receptor interaction, Toll-like receptor signaling pathway

Product images:



Immunohistochemistry analyzes of MIP-1a antibody (Cat.-No.: AP20656PU-N) in paraffin-embedded human lung carcinoma tissue.