

## Product datasheet for **AP20655PU-N**

### Caspase 12 (CASP12) Rabbit Polyclonal Antibody

#### Product data:

Product Type:	Primary Antibodies
Applications:	IHC, WB
Recommended Dilution:	<b>Western blot:</b> 1/500 - 1/1000. <b>Immunohistochemistry on paraffin sections:</b> 1/50 - 1/200.
Reactivity:	Human
Host:	Rabbit
Clonality:	Polyclonal
Specificity:	This antibody detects endogenous levels of Caspase12 protein. (region surrounding Pro99)
Formulation:	Phosphate buffered saline (PBS), pH 7.2 State: Aff - Purified State: Liquid purified Ig fraction Preservative: 0.05% sodium azide
Concentration:	1.0 mg/ml
Purification:	Affinity-chromatography using epitope-specific immunogen; purity is > 95% (by SDS-PAGE)
Conjugation:	Unconjugated
Storage:	Store undiluted at 2-8°C for one month or (in aliquots) at -20°C for longer. Avoid repeated freezing and thawing.
Stability:	Shelf life: one year from despatch.
Predicted Protein Size:	~ 49 kDa
Gene Name:	caspase 12 (gene/pseudogene)
Database Link:	<a href="#">Entrez Gene 100506742 Human Q6UXS9</a>



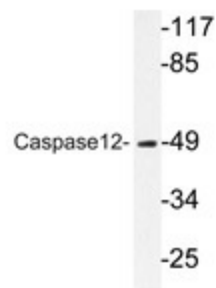
[View online »](#)

**Background:**

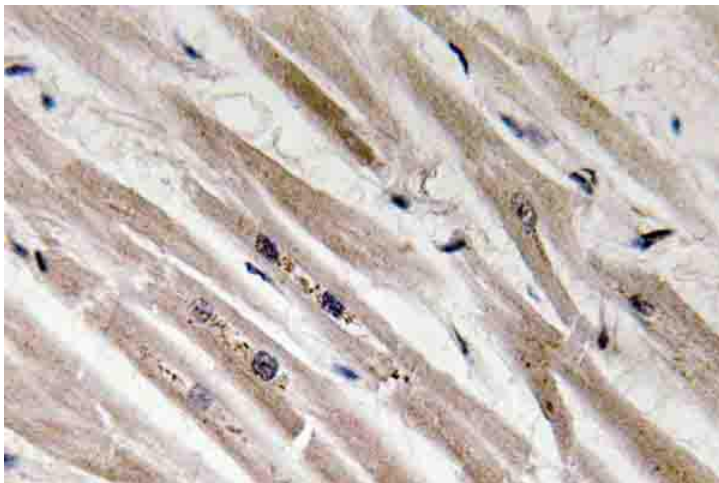
A unique family of cysteine proteases has been described that differs in sequence, structure and substrate specificity from any previously described protease family. This family, Ced-3/caspase-1, is composed of caspase-1, caspase-2, caspase-3, caspase-4, caspase-6 and caspase-7 (also designated Mch3, ICE-LAP3 or CMH-1), caspase-9, caspase-10, caspase-14, and caspase-5/caspase-12. Ced-3/caspase-1 family members function as key components of the apoptotic machinery and act to destroy specific target proteins which are critical to cellular longevity. Caspase-5 (also designated TY or ICERelIII) can cleave its own precursor, an activity that requires the cysteine 245 residue. The mouse homolog of caspase-5 is designated caspase-12. Frameshift mutations in caspase-5 have been identified in MMP tumors of the endometrium, colon and stomach, indicating that caspase-5 may be a new target gene in the microsatellite mutator pathway for cancer.

**Synonyms:**

CASP-12, CASP12

**Product images:**

Western blot analysis of Caspase12 antibody (Cat.-No.: AP20655PU-N) in extracts from HUVEC cells.



Immunohistochemistry (IHC) analyzes of Caspase12 antibody (Cat.-No.: AP20655PU-N) in paraffin-embedded human heart tissue.