

Product datasheet for **AP20653PU-N**

KCNMA1 Rabbit Polyclonal Antibody

Product data:

Product Type:	Primary Antibodies
Applications:	IHC, WB
Recommended Dilution:	Western Blot: 1/500-1/1000. Immunohistochemistry on paraffin sections 1/50-1/200.
Reactivity:	Human, Mouse, Rat
Host:	Rabbit
Clonality:	Polyclonal
Immunogen:	Synthetic peptide, corresponding to amino acids 750-800 of Human MaxiK α
Specificity:	This antibody detects endogenous levels of MaxiK α protein. (region surrounding Gln770)
Formulation:	Phosphate buffered saline (PBS), pH 7.2 State: Aff - Purified State: Liquid purified Ig fraction Preservative: 0.05% sodium azide
Concentration:	1.0 mg/ml
Purification:	Affinity-chromatography using epitope-specific immunogen; purity is > 95% (by SDS-PAGE)
Conjugation:	Unconjugated
Storage:	Store undiluted at 2-8°C for one month or (in aliquots) at -20°C for longer. Avoid repeated freezing and thawing.
Stability:	Shelf life: one year from despatch.
Predicted Protein Size:	~ 137 kDa
Gene Name:	potassium calcium-activated channel subfamily M alpha 1
Database Link:	Entrez Gene 16531 Mouse Entrez Gene 83731 Rat Entrez Gene 3778 Human Q12791



[View online »](#)

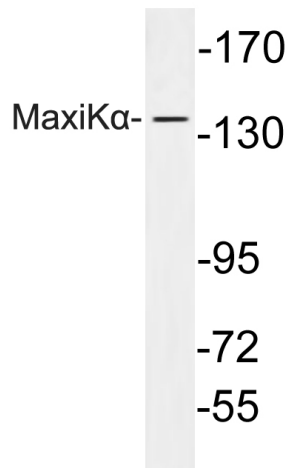
Background: MaxiK channels are large conductance, voltage and calcium sensitive potassium channels which are fundamental to the control of smooth muscle tone and neuronal excitability. MaxiK channels can be formed by 2 subunits: the poreforming alpha subunit and the modulatory beta subunit. KCNMB2 is an auxiliary beta subunit which decreases the activation time of MaxiK alpha subunit currents.

Synonyms: Maxi K, BK, K VCA, BKCA channel, Slowpoke homolog, Slo-alpha, Slo1, hSlo

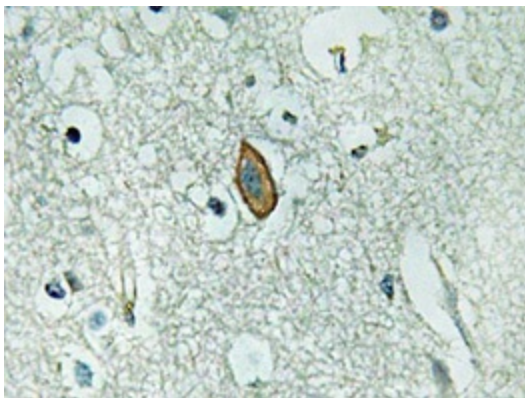
Protein Families: Druggable Genome, Ion Channels: Potassium, Transmembrane

Protein Pathways: Vascular smooth muscle contraction

Product images:



Western blot (WB) analysis of MaxiKa antibody in extracts from HeLa cells.



Immunohistochemistry analyzes of MaxiKa antibody in paraffin-embedded human brain tissue.