

## Product datasheet for **AP20651PU-S**

### Cathepsin B (CTSB) Rabbit Polyclonal Antibody

#### Product data:

Product Type:	Primary Antibodies
Applications:	IHC, WB
Recommended Dilution:	<b>Western blot:</b> 1/500-1/1000. <b>Immunohistochemistry on Paraffin Sections:</b> 1/50-1/200.
Reactivity:	Human, Mouse, Rat
Host:	Rabbit
Clonality:	Polyclonal
Specificity:	This antibody detects endogenous levels of Cathepsin B protein. (region surrounding asn217)
Formulation:	Phosphate buffered saline (PBS), pH~7.2 State: Aff - Purified State: Liquid purified Ig fraction (> 95% pure by SDS-PAGE). Preservative: 0.05% Sodium Azide
Concentration:	1.0 mg/ml
Purification:	Affinity Chromatography using epitope-specific immunogen.
Conjugation:	Unconjugated
Storage:	Store undiluted at 2-8°C for one month or (in aliquots) at -20°C for longer. Avoid repeated freezing and thawing.
Stability:	Shelf life: One year from despatch.
Predicted Protein Size:	~ 36 kDa
Gene Name:	cathepsin B
Database Link:	<u><a href="#">Entrez Gene 13030 Mouse</a></u> <u><a href="#">Entrez Gene 64529 Rat</a></u> <u><a href="#">Entrez Gene 1508 Human</a></u> <u><a href="#">P07858</a></u>



[View online »](#)

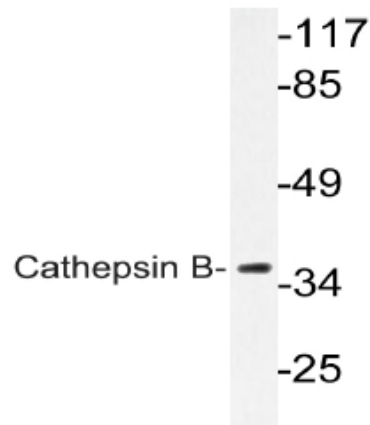
**Background:** The cathepsin family of proteolytic enzymes contains several diverse classes of proteases. The cysteine protease class comprises cathepsins B, L, H, K, S and O. The aspartyl protease class is composed of cathepsins D and E. cathepsin G is in the serine protease class. Most cathepsins are lysosomal and each is involved in cellular metabolism, participating in various events such as peptide biosynthesis and protein degradation. cathepsin B is expressed in luminal epithelial cells, indicating that cathepsin B is a marker for secretory cell death.

**Synonyms:** Cathepsin B1, APP secretase, APPS, CTSB, CPSB

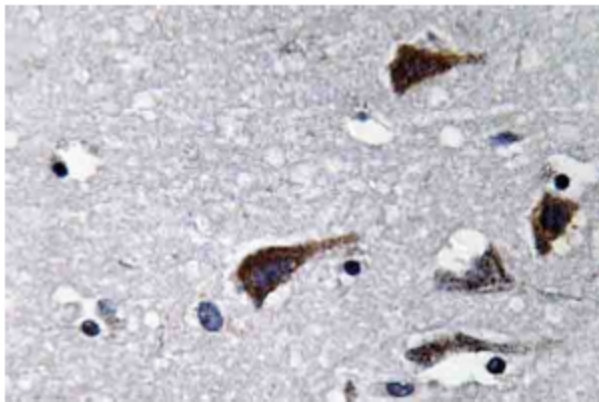
**Protein Families:** Druggable Genome, Protease

**Protein Pathways:** Antigen processing and presentation, Lysosome

### Product images:



Western blot (WB) analysis of Cathepsin B Antibody (Cat.-No.: [AP20651PU-N]) in extracts from COLO cells.



Immunohistochemistry analysis of Cathepsin B Antibody (Cat.-No.: [AP20651PU-N]) in Paraffin-Embedded Human brain tissue.