

## Product datasheet for **AP20648PU-N**

### Caspase-7 (CASP7) Rabbit Polyclonal Antibody

#### Product data:

Product Type:	Primary Antibodies
Applications:	IHC, WB
Recommended Dilution:	<b>Western blot:</b> 1/500-1/1000. <b>Immunohistochemistry on paraffin sections:</b> 1/50-1/200.
Reactivity:	Human, Rat
Host:	Rabbit
Clonality:	Polyclonal
Specificity:	This antibody detects endogenous levels of Caspase-7 protein. (region surrounding Met45)
Formulation:	Phosphate buffered saline (PBS), pH 7.2 State: Aff - Purified State: Liquid purified Ig fraction Preservative: 15 mM sodium azide
Concentration:	1.0 mg/ml
Purification:	Affinity-chromatography using epitope-specific immunogen; purity is > 95% (by SDS-PAGE)
Conjugation:	Unconjugated
Storage:	Store undiluted at 2-8°C for one month or (in aliquots) at -20°C for longer. Avoid repeated freezing and thawing.
Stability:	Shelf life: one year from despatch.
Predicted Protein Size:	~ 34 kDa
Gene Name:	caspase 7
Database Link:	<a href="#">Entrez Gene 64026 Rat</a> <a href="#">Entrez Gene 840 Human</a> <a href="#">P55210</a>



[View online »](#)

**Background:**

Caspases are cysteine proteases, expressed as inactive precursors, that mediate apoptosis by proteolysis of specific substrates. Caspases have the ability to cleave after aspartic acid residues. There are two classes of caspases involved in apoptosis; initiators (activation by receptor cluster) and effectors (activation by mitochondrial permeability transition). Proapoptotic signals autocatalytically activate initiator caspases, such as Caspase 8 and Caspase 9. Activated initiator caspases then process effector caspases, such as Caspase 3 and Caspase 7, which in turn cause cell collapse.

**Synonyms:**

CASP-7, CASP7, MCH3, CMH-1

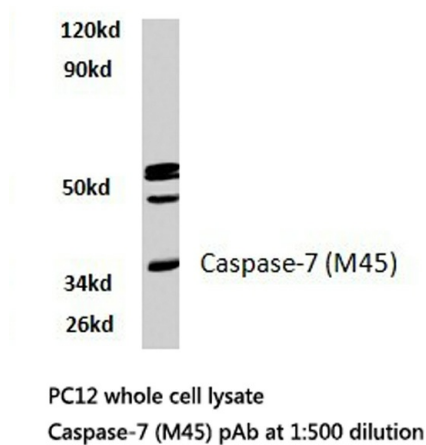
**Protein Families:**

Druggable Genome, Protease

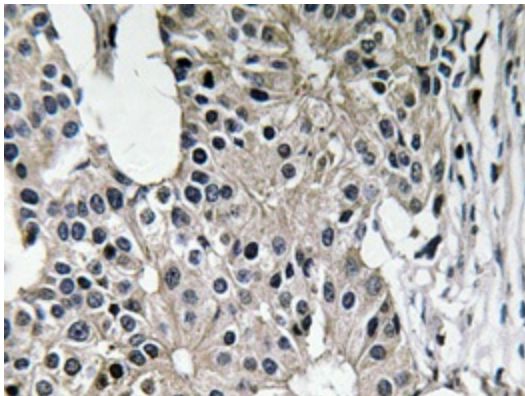
**Protein Pathways:**

Alzheimer's disease, Apoptosis

**Product images:**



Western blot (WB) analysis of Caspase-7 antibody (Cat.-No.: AP20648PU-N) in extracts from PC12 cells.



Immunohistochemistry analyzes of Caspase-7 antibody (Cat.-No.: AP20648PU-N) in paraffin-embedded human breast carcinoma tissue.