

Product datasheet for **AP20647PU-N**

CD13 (ANPEP) Rabbit Polyclonal Antibody

Product data:

Product Type:	Primary Antibodies
Applications:	IHC, WB
Recommended Dilution:	Western blot: 1/500-1/1000. Immunohistochemistry on paraffin sections 1/50-1/200.
Reactivity:	Human
Host:	Rabbit
Clonality:	Polyclonal
Immunogen:	Synthetic peptide, corresponding to amino acids 880-930 of Human CD13.
Specificity:	This antibody detects endogenous levels of CD13 protein. (region surrounding Gln917)
Formulation:	Phosphate buffered saline (PBS), pH 7.2, 50% glycerol State: Aff - Purified State: Liquid purified Ig fraction Preservative: 0.02% sodium azide
Concentration:	1.0 mg/ml
Purification:	Affinity-chromatography using epitope-specific immunogen; purity is > 95% (by SDS-PAGE)
Conjugation:	Unconjugated
Storage:	Store undiluted at 2-8°C for one month or (in aliquots) at -20°C for longer. Avoid repeated freezing and thawing.
Stability:	Shelf life: one year from despatch.
Predicted Protein Size:	~ 110, 140-160 kDa
Gene Name:	alanyl aminopeptidase, membrane
Database Link:	Entrez Gene 290 Human P15144



[View online »](#)

Background:

Human CD13 is expressed on the majority of peripheral blood monocytes and granulocytes. It is also expressed by the majority of acute myeloid leukemias, chronic myeloid leukemias in myeloid blast crisis, a smaller percentage of lymphoid leukemias and myeloid cell lines. CD13 is also found in several types of non hematopoietic cells such as fibroblasts and endothelial cells and in a soluble form in blood plasma. CD13 is not expressed on B cells, T cells, platelets or erythrocytes. In the mouse, CD13 is a non-covalently linked homodimer of approximately 150kD subunits expressed by a variety of cells including monocytes, macrophages, dendritic cell and veiled cells.

Synonyms:

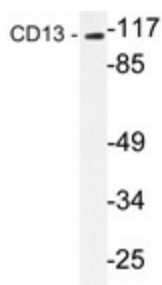
Aminopeptidase N, ANPEP, APN, PEPN

Protein Families:

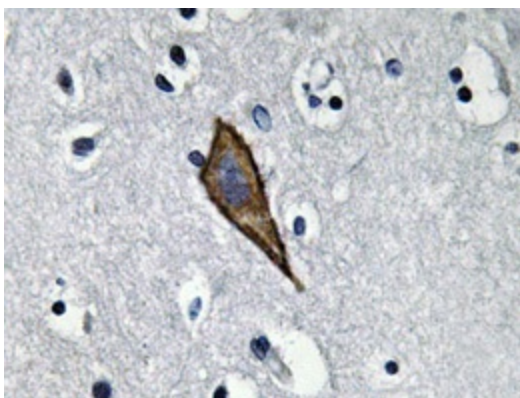
Druggable Genome, ES Cell Differentiation/IPS, Protease, Transmembrane

Protein Pathways:

Glutathione metabolism, Hematopoietic cell lineage, Metabolic pathways, Renin-angiotensin system

Product images:

Western blot analysis of CD13 antibody (Cat.-No.: AP20647PU-N) in extracts from mouse liver cells.



Immunohistochemistry analyzes of CD13 antibody (Cat.-No.: AP20647PU-N) in paraffin-embedded human brain tissue.