

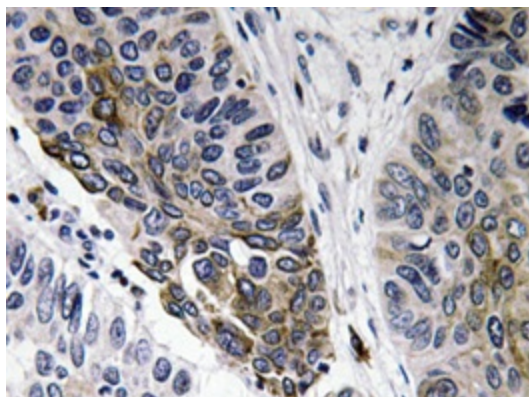
## Product datasheet for **AP20644PU-M**

### Human IgA Rabbit Polyclonal Antibody

#### Product data:

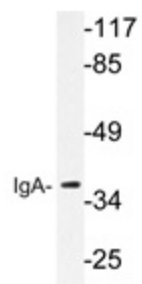
Product Type:	Secondary Antibodies
Product Name:	Human IgA Rabbit Polyclonal Antibody
Applications:	IHC, WB
Recommended Dilution:	<b>Western blot:</b> 1/500-1/1000. <b>Immunohistochemistry on Paraffin Sections:</b> 1/50-1/200.
Reactivity:	Human
Host:	Rabbit
Formulation:	PBS, pH~7.2 State: Aff - Purified State: Liquid purified Ig fraction (> 95% pure by SDS-PAGE). Preservative: 0.05% Sodium Azide
Concentration:	1.0 mg/ml
Purification:	Affinity Chromatography using epitope-specific immunogen.
Conjugation:	Unconjugated
Storage:	Store undiluted at 2-8°C for one month or (in aliquots) at -20°C for longer. Avoid repeated freezing and thawing.

#### Product images:



**Immunohistochemistry** analyzes of IgA antibody (Cat.-No.: [AP20644PU-N]) in paraffin-embedded human lung carcinoma tissue.





**Western blot** analysis of IgA antibody (Cat.-No.: [AP20644PU-N]) in extracts from HeLa cells.