

Product datasheet for **AP20643PU-M**

Cholecystokinin (CCK) Rabbit Polyclonal Antibody

Product data:

Product Type:	Primary Antibodies
Applications:	IHC
Recommended Dilution:	Immunohistochemistry on Paraffin Sections: 1/50-1/200
Reactivity:	Human, Mouse, Rat
Host:	Rabbit
Clonality:	Polyclonal
Immunogen:	Synthetic peptide, corresponding to amino acids 21-70 of Human CCK.
Specificity:	This antibody detects endogenous levels of CCK protein. (region surrounding Val46)
Formulation:	Phosphate buffered saline (PBS), pH~7.2 with 0.02% Sodium Azide and 50% Glycerol. State: Aff - Purified State: Liquid purified Ig fraction (> 95% pure by SDS-PAGE)
Concentration:	1.0 mg/ml
Purification:	Affinity Chromatography using epitope-specific immunogen
Conjugation:	Unconjugated
Storage:	Store undiluted at 2-8°C for one month or (in aliquots) at -20°C for longer. Avoid repeated freezing and thawing.
Stability:	Shelf life: one year from despatch.
Predicted Protein Size:	~13 kDa
Gene Name:	cholecystokinin
Database Link:	Entrez Gene 12424 Mouse Entrez Gene 25298 Rat Entrez Gene 885 Human P06307



[View online »](#)

Background:

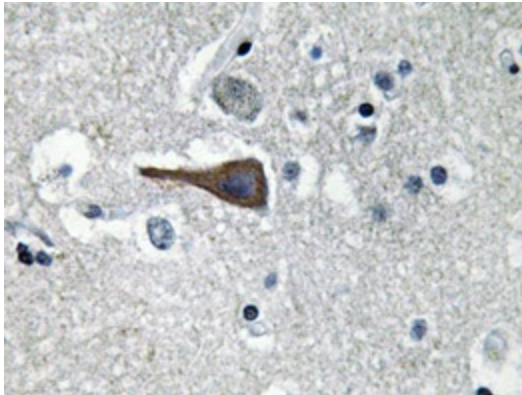
CCK (cholecystokinin) is a 115 amino acid secreted protein belonging to the gastrin/cholecystokinin family. CCK has been shown to stimulate the growth of pancreatic cancer. As a peptide hormone, CCK induces gallbladder contraction and the release of pancreatic enzymes in the gut. Binding of CCK to CCK-A receptors stimulates amylase release from the pancreas, while binding to CCK-B receptors stimulates gastric acid secretion. The function of CCK in the brain is not clear. The CCK precursor is cleaved by proteases to produce a number of active cholecystokinins including CCK58, CCK58 desnonopeptide, CCK39, CCK33, CCK25, CCK18, CCK12, CCK8, CCK7 and CCK5.

Synonyms:

cholecystokinin; MGC117187; OTTHUMP00000209369

Protein Families:

Druggable Genome, Secreted Protein

Product images:


Immunohistochemistry analyzes of CCK antibody in paraffin-embedded human brain tissue.