

Product datasheet for **AP20640PU-M**

HIV TAT specific factor 1 (HTATSF1) Rabbit Polyclonal Antibody

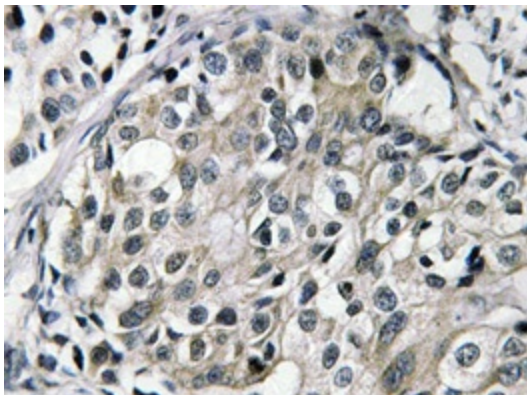
Product data:

Product Type:	Primary Antibodies
Applications:	IHC
Recommended Dilution:	Immunohistochemistry on paraffin sections: 1/50-1/200.
Reactivity:	Human, Mouse, Rat
Host:	Rabbit
Clonality:	Polyclonal
Specificity:	This antibody detects endogenous levels of TAT protein. (region surrounding Glu304)
Formulation:	Phosphate buffered saline (PBS), pH 7.2 State: Aff - Purified State: Liquid purified Ig fraction Preservative: 0.05% sodium azide
Concentration:	1.0 mg/ml
Purification:	Affinity-chromatography using epitope-specific immunogen; purity is > 95% (by SDS-PAGE)
Conjugation:	Unconjugated
Storage:	Store undiluted at 2-8°C for one month or (in aliquots) at -20°C for longer. Avoid repeated freezing and thawing.
Stability:	Shelf life: one year from despatch.
Predicted Protein Size:	~ 51 kDa
Gene Name:	HIV-1 Tat specific factor 1
Database Link:	Entrez Gene 72459 Mouse Entrez Gene 317612 Rat Entrez Gene 27336 Human O43719
Background:	HIV 1 tat (Transactivator of Transcription) protein is a pleiotropic factor that induces a broad range of biological effects in numerous cell types. At the HIV promoter, tat is a powerful transactivator of gene expression which acts by inducing chromatin remodeling and by recruiting elongation-competent transcriptional complexes on to the viral LTR.
Synonyms:	Tat-SF1
Protein Families:	Transcription Factors



[View online »](#)

Product images:



Immunohistochemistry (IHC) analyzes of TAT antibody (Cat.-No.: [AP20640PU-N]) in paraffin-embedded human breast carcinoma tissue.