

## Product datasheet for **AP20638PU-S**

### **RUNX3 Rabbit Polyclonal Antibody**

#### **Product data:**

Product Type:	Primary Antibodies
Applications:	WB
Recommended Dilution:	<b>Western blot:</b> 1/500 - 1/1000.
Reactivity:	Human, Mouse
Host:	Rabbit
Clonality:	Polyclonal
Specificity:	This antibody detects endogenous levels of RUNX3 protein. (region surrounding Arg182)
Formulation:	PBS, pH 7.2 State: Aff - Purified State: Liquid purified Ig fraction Preservative: 0.05% sodium azide
Concentration:	1.0 mg/ml
Purification:	Affinity chromatography (> 95% (by SDS-PAGE))
Conjugation:	Unconjugated
Storage:	Store undiluted at 2-8°C for one month or (in aliquots) at -20°C for longer. Avoid repeated freezing and thawing.
Stability:	Shelf life: one year from despatch.
Predicted Protein Size:	~ 44 kDa
Gene Name:	runt related transcription factor 3
Database Link:	<a href="#">Entrez Gene 12399 Mouse</a> <a href="#">Entrez Gene 864 Human</a> <a href="#">Q13761</a>



[View online »](#)

**Background:**

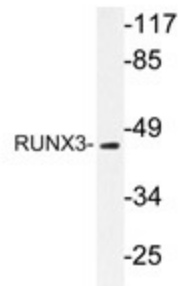
The mammalian Runt-related transcription factor (RUNX) family comprises three members, RUNX1 (also designated AML-1, PEBP2 $\alpha$ B, CBFA2), RUNX2 (also designated AML-3, PEBP2 $\alpha$ A, CBFA1, Osf2) and RUNX3 (also designated AML-2, PEBP $\alpha$ C, CBFA3), and belongs to the acute myeloid leukemia (AML) family. RUNX family members are DNA-binding proteins that regulate the expression of genes involved in cellular differentiation and cell cycle progression. RUNX3 is expressed in cells of hematopoietic origin, including myeloid and B-cell lines and spleen. By playing a role in controlling the growth and differentiation of gastric epithelial cells, RUNX3 is a strong candidate as a gastric cancer tumor suppressor. Specifically, hypermethylation inactivates the gene encoding RUNX3. The detection of hypermethylation at multiple regions within the RUNX3 CpG island may aid in the diagnosis and risk assessment of gastric cancer.

**Synonyms:**

Runt-related transcription factor 3, AML2, CBFA3, CBF-alpha-3, PEBP2A3, PEBP2-alpha C, PEA2-alpha C

**Protein Families:**

Transcription Factors

**Product images:**

Western blot analysis of RUNX3 antibody (Cat.-No.: [AP20638PU-N]) in extracts from HUVEC cells.