

## Product datasheet for **AP20636PU-M**

### beta Sarcoglycan (SGCB) Rabbit Polyclonal Antibody

#### Product data:

Product Type:	Primary Antibodies
Applications:	IHC, WB
Recommended Dilution:	<b>Western blot:</b> 1/500-1/1000. <b>Immunohistochemistry on paraffin sections:</b> 1/50-1/200.
Reactivity:	Human, Mouse
Host:	Rabbit
Clonality:	Polyclonal
Specificity:	This antibody detects endogenous levels of Sarcoglycan- $\beta$ protein. (region surrounding Val136)
Formulation:	Phosphate buffered saline (PBS), pH 7.2 State: Aff - Purified State: Liquid purified Ig fraction Preservative: 0.05% sodium azide
Concentration:	1.0 mg/ml
Purification:	Affinity-chromatography using epitope-specific immunogen; purity is > 95% (by SDS-PAGE)
Conjugation:	Unconjugated
Storage:	Store undiluted at 2-8°C for one month or (in aliquots) at -20°C for longer. Avoid repeated freezing and thawing.
Stability:	Shelf life: one year from despatch.
Predicted Protein Size:	~ 38 kDa
Gene Name:	sarcoglycan beta
Database Link:	<a href="#">Entrez Gene 24051 Mouse</a> <a href="#">Entrez Gene 6443 Human</a> <a href="#">Q16585</a>



[View online »](#)

**Background:**

The sarcoglycan transmembrane proteins are members of the dystrophin complex. Sarcoglycans cluster together to form a complex, which is localized in the cell membrane of skeletal, cardiac and smooth muscle fibers. Four sarcoglycan subunit proteins, designated  $\alpha$ -,  $\beta$ -,  $\gamma$ - and  $\delta$ -sarcoglycan, form a complex on the skeletal muscle cell surface membrane. A genetic defect in any one of these proteins causes the loss or marked decrease of the whole sarcoglycan complex, which is observed in the autosomal recessive muscular dystrophy, sarcoglycanopathy. In smooth muscle,  $\beta$ - and  $\delta$ -sarcoglycans are associated with  $\epsilon$ -sarcoglycan, a glycoprotein homologous to  $\alpha$ -sarcoglycan. Additionally, a complete deficiency in  $\delta$ -sarcoglycan is the cause of the Syrian hamster BIO.14 cardiomyopathy.

**Synonyms:**

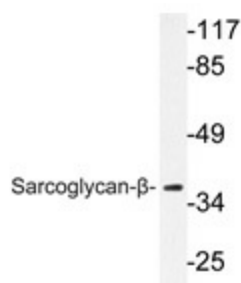
Beta sarcoglycan, Beta-SG, A3b, 43DAG

**Protein Families:**

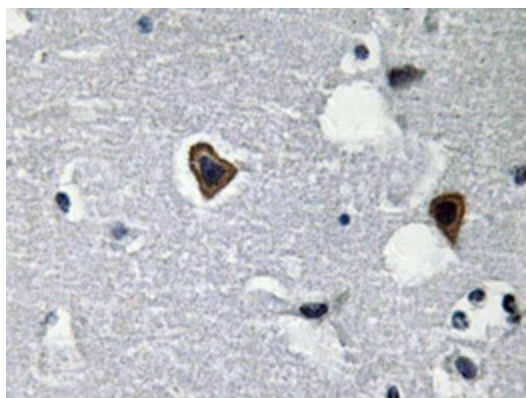
Druggable Genome, Transmembrane

**Protein Pathways:**

Arrhythmogenic right ventricular cardiomyopathy (ARVC), Dilated cardiomyopathy, Hypertrophic cardiomyopathy (HCM), Viral myocarditis

**Product images:**


Western blot analysis of Sarcoglycan- $\beta$  antibody (Cat.-No.: [AP20636PU-N]) in extracts from A549 cells.



Immunohistochemistry analyzes of Sarcoglycan- $\beta$  antibody (Cat.-No.: [AP20636PU-N]) in paraffin-embedded human brain tissue.