

## Product datasheet for **AP20635PU-S**

### PDGF AA (PDGFA) Rabbit Polyclonal Antibody

#### Product data:

Product Type:	Primary Antibodies
Applications:	IHC, WB
Recommended Dilution:	<b>Western blot:</b> 1/500-1/1000. <b>Immunohistochemistry on paraffin sections:</b> 1/50-1/200.
Reactivity:	Human, Mouse, Rat
Host:	Rabbit
Clonality:	Polyclonal
Immunogen:	Synthetic peptide, corresponding to amino acids 121-160 of Human PDGF-A.
Specificity:	This detects endogenous levels of PDGF-A protein. (region surrounding Lys154)
Formulation:	Phosphate buffered saline (PBS), pH 7.2 State: Aff - Purified State: Liquid purified Ig fraction Preservative: 0.05% sodium azide
Concentration:	1.0 mg/ml
Purification:	Affinity-chromatography using epitope-specific immunogen; purity is > 95% (by SDS-PAGE)
Conjugation:	Unconjugated
Storage:	Store undiluted at 2-8°C for one month or (in aliquots) at -20°C for longer. Avoid repeated freezing and thawing.
Stability:	Shelf life: one year from despatch.
Predicted Protein Size:	~ 24 kDa
Gene Name:	platelet derived growth factor subunit A
Database Link:	<u><a href="#">Entrez Gene 18590 Mouse</a></u> <u><a href="#">Entrez Gene 25266 Rat</a></u> <u><a href="#">Entrez Gene 5154 Human</a></u> <u><a href="#">P04085</a></u>



[View online »](#)

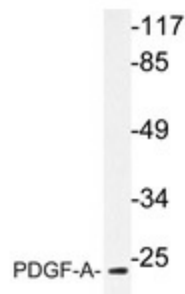
**Background:** PDGF is a mitogen for mesenchyme- and glia-derived cells. It consists of two disulfide-bonded polypeptide chains, A and B, and occurs as three isoforms, PDGF-AA, PDGF-AB and PDGF-BB. The three isoforms bind with different affinities to two receptor types,  $\alpha$  and  $\beta$ , which are structurally related and endowed with protein-tyrosine kinase domains. Ligand binding induces activation of the receptor kinases by formation of receptor dimers; the A subunit of PDGF binds only to  $\alpha$  receptors with high affinity, whereas the B subunit can bind to both  $\alpha$  and  $\beta$  receptors. Evidence suggests that PDGF may function as a neurotrophic factor. The fact that receptors for PDGF-A are expressed in oligodendrocyte progenitor cells whereas receptors for PDGF-B are expressed on neurons suggests that the different isoforms of PDGF may regulate growth and differentiation of different cell types in the developing central nervous system by paracrine and autocrine routes.

**Synonyms:** Platelet-derived growth factor subunit A, PDGF alpha, PDGF A, PDGF-A, Platelet-derived growth factor alpha, PDGF subunit A, Platelet-derived growth factor A chain, PDGF1, PDGF-1

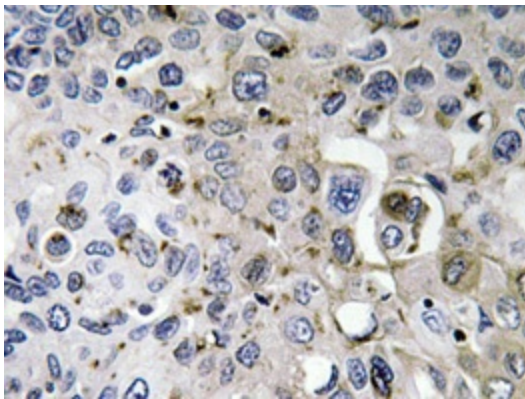
**Protein Families:** Druggable Genome

**Protein Pathways:** Cytokine-cytokine receptor interaction, Focal adhesion, Gap junction, Glioma, MAPK signaling pathway, Melanoma, Pathways in cancer, Prostate cancer, Regulation of actin cytoskeleton

### Product images:



Western blot analysis of PDGF-A antibody in extracts from Jurkat cells.



Immunohistochemistry analyzes of PDGF-A antibody in paraffin-embedded human lung carcinoma tissue.