

Product datasheet for **AP20634PU-M**

CD34 Rabbit Polyclonal Antibody

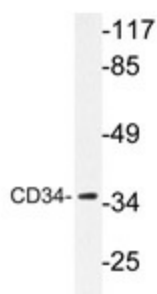
Product data:

Product Type:	Primary Antibodies
Applications:	WB
Recommended Dilution:	Western blot: 1/500-1/1000.
Reactivity:	Human, Mouse
Host:	Rabbit
Clonality:	Polyclonal
Specificity:	This antibody detects endogenous levels of CD34 protein.
Formulation:	Phosphate buffered saline (PBS), pH 7.2 State: Aff - Purified State: Liquid purified Ig fraction Preservative: 0.05% sodium azide
Concentration:	1.0 mg/ml
Purification:	Affinity-chromatography using epitope-specific immunogen; purity is > 95% (by SDS-PAGE).
Conjugation:	Unconjugated
Storage:	Store undiluted at 2-8°C for one month or (in aliquots) at -20°C for longer. Avoid repeated freezing and thawing.
Stability:	Shelf life: one year from despatch.
Predicted Protein Size:	~ 41 kDa
Gene Name:	CD34 molecule
Database Link:	Entrez Gene 12490 Mouse Entrez Gene 947 Human P28906



[View online »](#)

Background:	CD34 is a heavily glycosylated, transmembrane glycoprotein that is expressed on the surface of lymphohematopoietic stem and progenitor cells, small-vessel endothelial cells, embryonic fibroblasts and some cells in fetal and adult nervous tissue. CD34 antigen expression is highest in the most primitive stem cells and is gradually lost as lineage committed progenitors differentiate. The CD34 antigen is also present on capillary endothelial cells and on bone marrow stromal cells. The CD34 cytoplasmic domain has an intracellular domain that contains consensus sites for activated protein kinase C (PKC) phosphorylation as well as serine, threonine and tyrosine phosphorylation consensus sites.
Synonyms:	Hematopoietic progenitor cell marker
Protein Families:	Adult stem cells, Cancer stem cells, Druggable Genome, Embryonic stem cells, ES Cell Differentiation/IPS, Transmembrane
Protein Pathways:	Cell adhesion molecules (CAMs), Hematopoietic cell lineage

Product images:


Western blot analysis of CD34 antibody (Cat.-No.: [AP20634PU-N]) in extracts from HepG2 cells.