

## Product datasheet for **AP20632PU-N**

### **SDF1 (CXCL12) Rabbit Polyclonal Antibody**

#### **Product data:**

Product Type:	Primary Antibodies
Applications:	IHC, WB
Recommended Dilution:	<b>Western blot:</b> 1/500-1/1000. <b>Immunohistochemistry on Paraffin Sections:</b> 1/50-1/200.
Reactivity:	Human, Mouse, Rat
Host:	Rabbit
Clonality:	Polyclonal
Immunogen:	Synthetic peptide corresponding to amino acids 50-100 of Human SDF-1.
Specificity:	This antibody detects endogenous levels of SDF-1 protein. (region surrounding Met93)
Formulation:	Phosphate buffered saline (PBS), pH~7.2 State: Aff - Purified State: Liquid purified Ig fraction (> 95% pure by SDS-PAGE) Preservative: 0.05% Sodium Azide
Concentration:	1.0 mg/ml
Purification:	Affinity Chromatography using epitope-specific immunogen
Conjugation:	Unconjugated
Storage:	Store undiluted at 2-8°C for one month or (in aliquots) at -20°C for longer. Avoid repeated freezing and thawing.
Stability:	Shelf life: one year from despatch.
Predicted Protein Size:	~10.0 kDa
Gene Name:	C-X-C motif chemokine ligand 12
Database Link:	<u><a href="#">Entrez Gene 20315 Mouse</a></u> <u><a href="#">Entrez Gene 24772 Rat</a></u> <u><a href="#">Entrez Gene 6387 Human P48061</a></u>



[View online »](#)

**Background:**

SDF-1 was originally described as a pre-B cell stimulatory factor, but has now been shown to function as a potent chemoattractant for T cells and monocytes, but not neutrophils. Receptors for the C-X-C family are G protein-coupled, seven-pass, transmembrane domain proteins which include IL-8RA, IL-8RB and fusin (also designated LESTR or CXCR-4). Fusin is highly homologous to the IL-8 receptors, sharing 37% sequence identity at the amino acid level. The IL-8 receptors bind to IL-8, NAP-2 and MSGA, while fusin binds to its cognate ligand, SDF-1. Fusin has been identified as the major co-receptor for T-tropic HIV-1, and SDF-1 has been shown to inhibit HIV-1 infection. Six human SDF-1 isoforms exist due to alternative splicing of CXCL12, the gene encoding SDF-1.

**Synonyms:**

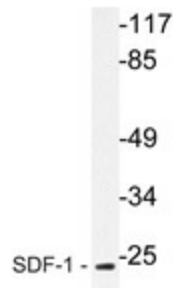
Stromal cell-derived factor 1, SDF1A, SDF1B, IRH, hIRH, PBSF

**Protein Families:**

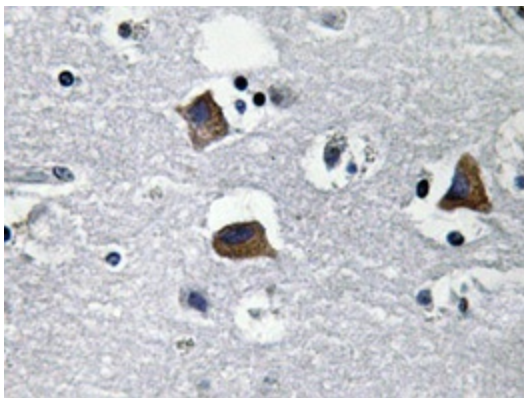
Druggable Genome, ES Cell Differentiation/IPS, Secreted Protein

**Protein Pathways:**

Axon guidance, Chemokine signaling pathway, Cytokine-cytokine receptor interaction, Leukocyte transendothelial migration

**Product images:**


Western blot analysis of SDF-1 Antibody in extracts from HepG2 cells.



Immunohistochemistry analysis of SDF-1 Antibody in paraffin-embedded human brain tissue.