

## Product datasheet for **AP20631PU-M**

### RFC3 Rabbit Polyclonal Antibody

#### Product data:

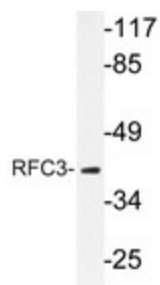
Product Type:	Primary Antibodies
Applications:	IHC, WB
Recommended Dilution:	<b>Western blot:</b> 1/500-1/1000. <b>Immunohistochemistry on paraffin sections:</b> 1/50-1/200.
Reactivity:	Human, Mouse, Rat
Host:	Rabbit
Clonality:	Polyclonal
Specificity:	This antibody detects endogenous levels of RFC3 protein. (region surrounding Leu227)
Formulation:	Phosphate buffered saline (PBS), pH 7.2 State: Aff - Purified State: Liquid purified Ig fraction Preservative: 0.05% sodium azide
Concentration:	1.0 mg/ml
Purification:	Affinity-chromatography using epitope-specific immunogen; purity is > 95% (by SDS-PAGE)
Conjugation:	Unconjugated
Storage:	Store undiluted at 2-8°C for one month or (in aliquots) at -20°C for longer. Avoid repeated freezing and thawing.
Stability:	Shelf life: one year from despatch.
Predicted Protein Size:	~ 38 kDa
Gene Name:	replication factor C subunit 3
Database Link:	<u><a href="#">Entrez Gene 69263 Mouse</a></u> <u><a href="#">Entrez Gene 288414 Rat</a></u> <u><a href="#">Entrez Gene 5983 Human</a></u> <u><a href="#">P40938</a></u>



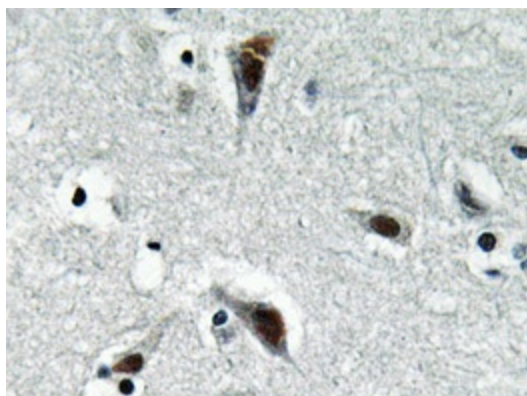
[View online »](#)

<b>Background:</b>	The elongation of primed DNA templates by DNA polymerase delta and DNA polymerase epsilon requires the accessory proteins proliferating cell nuclear antigen (PCNA) and replication factor C (RFC). RFC, also named activator 1, is a protein complex consisting of five distinct subunits of 140, 40, 38, 37, and 36 kD. This gene encodes the 38 kD subunit. This subunit is essential for the interaction between the 140 kD subunit and the core complex that consists of the 36, 37, and 40 kD subunits. Alternatively spliced transcript variants encoding distinct isoforms have been described.
<b>Synonyms:</b>	Replication factor C subunit 3, Activator 1 subunit 3, RF-C 38 kDa subunit
<b>Protein Families:</b>	Stem cell - Pluripotency
<b>Protein Pathways:</b>	DNA replication, Mismatch repair, Nucleotide excision repair

### Product images:



Western blot analysis of RFC3 antibody (Cat.-No.: [AP20631PU-N]) in extracts from HepG2 cells.



Immunohistochemistry analyzes of RFC3 antibody (Cat.-No.: [AP20631PU-N]) in paraffin-embedded human brain tissue.