

## Product datasheet for **AP20626PU-N**

### KRT13 Rabbit Polyclonal Antibody

#### Product data:

Product Type:	Primary Antibodies
Applications:	IHC, WB
Recommended Dilution:	<b>Western blot:</b> 1/500-1/1000. <b>Immunohistochemistry on paraffin sections:</b> 1/50-1/200.
Reactivity:	Human, Mouse, Rat
Host:	Rabbit
Clonality:	Polyclonal
Specificity:	This antibody detects endogenous levels of Cytokeratin 13 protein. (region surrounding Glu282)
Formulation:	Phosphate buffered saline (PBS), pH 7.2 State: Aff - Purified State: Liquid purified Ig fraction Preservative: 0.05% sodium azide
Concentration:	1.0 mg/ml
Purification:	Affinity-chromatography using epitope-specific immunogen; purity is > 95% (by SDS-PAGE).
Conjugation:	Unconjugated
Storage:	Store undiluted at 2-8°C for one month or (in aliquots) at -20°C for longer. Avoid repeated freezing and thawing.
Stability:	Shelf life: one year from despatch.
Predicted Protein Size:	~ 50 kDa
Gene Name:	keratin 13
Database Link:	<u><a href="#">Entrez Gene 16663 Mouse</a></u> <u><a href="#">Entrez Gene 287699 Rat</a></u> <u><a href="#">Entrez Gene 3860 Human</a></u> <u><a href="#">P13646</a></u>



[View online »](#)

**Background:**

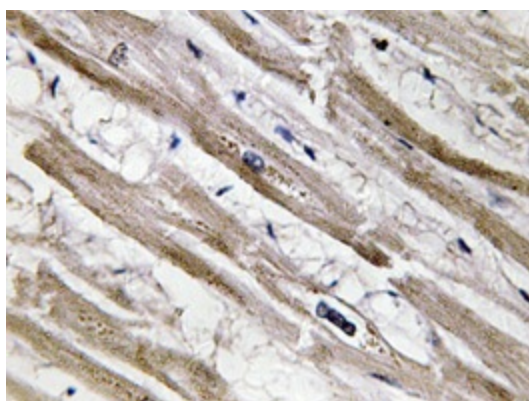
Cytokeratins comprise a diverse group of intermediate filament proteins (IFPs) that are expressed as pairs in both keratinized and non-keratinized epithelial tissue. Cytokeratins play a critical role in differentiation and tissue specialization and function to maintain the overall structural integrity of epithelial cells. Cytokeratins have been found to be useful markers of tissue differentiation, which is directly applicable to the characterization of malignant tumors. Cytokeratins 10 and 13 are present in the cytoskeletal region of a subset of squamous cell carcinomas. Cytokeratin 13 belongs to the intermediate filament family and is a heterotetramer of two type I acidic and two type II basic keratins. It is generally associated with Cytokeratin 4. Defects in the KRT13 gene are a cause of white sponge nevus of cannon (WSN), a rare autosomal dominant disorder which predominantly affects noncornified stratified squamous epitheli,a and is characterized by the presence of soft, white and spongy plaques in the oral mucosa.

**Synonyms:**

CK-13, CK13, Keratin-13, KRT13, K13, KRT-13

**Product images:**


Western blot analysis of Cytokeratin 13 antibody (Cat.-No.: AP20626PU-N) in extracts from HepG2 cells.



Immunohistochemistry analyzes of Cytokeratin 13 antibody (Cat.-No.: AP20626PU-N) in paraffin-embedded human heart tissue.