

Product datasheet for **AP20625PU-N**

PAI1 (SERPINE1) Rabbit Polyclonal Antibody

Product data:

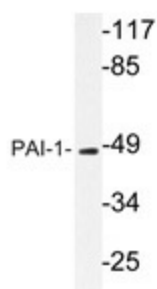
| | |
|-------------------------|--|
| Product Type: | Primary Antibodies |
| Applications: | IHC, WB |
| Recommended Dilution: | Western blot: 1/500-1/1000. Immunohistochemistry on Paraffin Sections: 1/50-1/200. |
| Reactivity: | Human, Mouse, Rat |
| Host: | Rabbit |
| Clonality: | Polyclonal |
| Specificity: | This antibody detects endogenous levels of PAI-1 protein. (region surrounding asn315) |
| Formulation: | Phosphate buffered saline (PBS), pH~7.2 State: Aff - Purified State: Liquid purified Ig fraction (> 95% pure by SDS-PAGE) Preservative: 0.05% Sodium Azide |
| Concentration: | 1.0 mg/ml |
| Purification: | Affinity Chromatography using epitope-specific immunogen |
| Conjugation: | Unconjugated |
| Storage: | Store undiluted at 2-8°C for one month or (in aliquots) at -20°C for longer. Avoid repeated freezing and thawing. |
| Stability: | Shelf life: one year from despatch. |
| Predicted Protein Size: | ~37 kDa |
| Gene Name: | serpin family E member 1 |
| Database Link: | <u>Entrez Gene 18787 Mouse</u> <u>Entrez Gene 24617 Rat</u> <u>Entrez Gene 5054 Human</u> <u>P05121</u> |



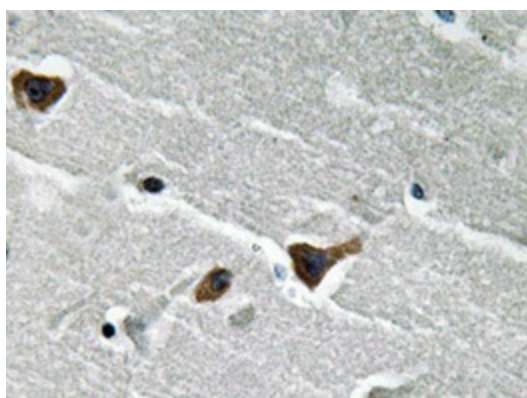
[View online »](#)

| | |
|--------------------------|---|
| Background: | PAI1 (plasminogen activator inhibitor 1) is originally cloned from human endothelial cell (Pannekoek 1986, Ginsburg 1986) and rat hepatoma cell 3 cDNA libraries. As a member of the serpin family of serine protease inhibitors, PAI1 inhibits both tissue type plasminogen activator (tPA) and urokinase type plasminogen activator (uPA). High PAI1 levels are associated with an increased risk of thromboembolic disease while PAI1 deficiency may represent an inherited autosomal recessive bleeding disorder. |
| Synonyms: | Serpin E1, PLANH1, Plasminogen Activator Inhibitor 1, PAI-1, PAI |
| Protein Families: | Druggable Genome, Secreted Protein |
| Protein Pathways: | Complement and coagulation cascades, p53 signaling pathway |

Product images:



Western blot analysis of PAI-1 Antibody (Cat.-No AP20625PU-N) in extracts from Jurkat cells.



Immunohistochemistry analyzes of PAI-1 Antibody (Cat.-No AP20625PU-N) in paraffin-embedded human brain tissue.