

Product datasheet for **AP20624PU-N**

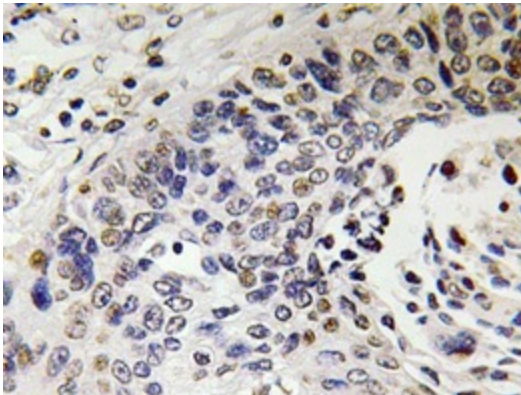
NFH (NEFH) Rabbit Polyclonal Antibody

Product data:

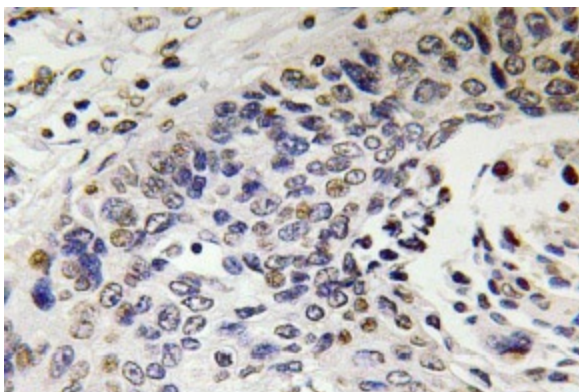
Product Type:	Primary Antibodies
Applications:	IHC
Recommended Dilution:	Immunohistochemistry on paraffin sections 1/50-1/200.
Reactivity:	Human
Host:	Rabbit
Clonality:	Polyclonal
Specificity:	This antibody detects endogenous levels of NF-H protein. (region surrounding Glu972)
Formulation:	Phosphate buffered saline (PBS), pH 7.2 State: Aff - Purified State: Liquid purified Ig fraction Preservative: 0.05% sodium azide
Concentration:	1.0 mg/ml
Purification:	Affinity-chromatography using epitope-specific immunogen; purity is > 95% (by SDS-PAGE)
Conjugation:	Unconjugated
Storage:	Store undiluted at 2-8°C for one month or (in aliquots) at -20°C for longer. Avoid repeated freezing and thawing.
Stability:	Shelf life: one year from despatch.
Predicted Protein Size:	~ 112 kDa
Gene Name:	neurofilament, heavy polypeptide
Database Link:	Entrez Gene 4744 Human P12036

[View online »](#)

- Background:** Neurofilament-H (for neurofilament heavy polypeptide, or NF-H), a member of the intermediate filament family, is a major component of neuronal cytoskeletons. Neurofilaments are dynamic structures; they contain phosphorylation sites for a large number of protein kinases, including protein kinase A, protein kinase C, cyclin-dependent kinase 5, extracellular signal regulated kinase, glycogen synthase kinase- 3, and stress-activated protein kinase gamma. In addition to their role in the control of axon caliber, neurofilaments may affect other cytoskeletal elements, such as microtubules and actin filaments. Changes in neurofilament phosphorylation or metabolism are frequently observed in neurodegenerative diseases, including amyotrophic lateral sclerosis (ALS), Parkinson's disease, and Alzheimer's disease.
- Synonyms:** NEFH,NF-H,KIAA0845, NFH, 200 kDa neurofilament protein, Neurofilament triplet H protein, (Neuronal Marker), heavy polypeptide
- Protein Families:** Druggable Genome
- Protein Pathways:** Amyotrophic lateral sclerosis (ALS)
- Product images:**



Immunohistochemistry analyzes of NF-H antibody (Cat.-No.: AP20624PU-N) in paraffin-embedded human lung carcinoma tissue.



Immunohistochemistry (IHC) analyzes of NF-H antibody (Cat.-No.: Ap20624PU-N) in paraffin-embedded human lung carcinoma tissue.