

Product datasheet for **AP20619PU-M**

ATP5MF Rabbit Polyclonal Antibody

Product data:

Product Type:	Primary Antibodies
Applications:	IHC
Recommended Dilution:	Immunohistochemistry on paraffin sections: 1/50 - 1/200.
Reactivity:	Human
Host:	Rabbit
Clonality:	Polyclonal
Specificity:	This antibody detects endogenous levels of ATP5J2 protein. (region surrounding Gly42)
Formulation:	Phosphate buffered saline (PBS), pH 7.2 State: Aff - Purified State: Liquid purified Ig fraction Preservative: 0.05% sodium azide
Concentration:	1.0 mg/ml
Purification:	Affinity-chromatography using epitope-specific immunogen; purity is > 95% (by SDS-PAGE).
Conjugation:	Unconjugated
Storage:	Store undiluted at 2-8°C for one month or (in aliquots) at -20°C for longer. Avoid repeated freezing and thawing.
Stability:	Shelf life: one year from despatch.
Gene Name:	ATP synthase, H ⁺ transporting, mitochondrial Fo complex subunit F2
Database Link:	Entrez Gene 9551 Human P56134
Background:	ATP5J2 is part of the complex F0 domain of the mitochondrial ATP synthase. This produces ATP from ADP in the presence of a proton gradient across the membrane which is generated by electron transport complexes of the respiratory chain. It is composed of two complexes: the soluble catalytic core, F1, and the membrane-spanning component, Fo, which comprises the proton channel. ATP5J2 encodes the f subunit of the Fo complex. There are 2 isoforms produced by alternative splicing.
Synonyms:	ATP5J2, ATP5JL, F1F0 ATP synthase subunit f, Complex V subunit f

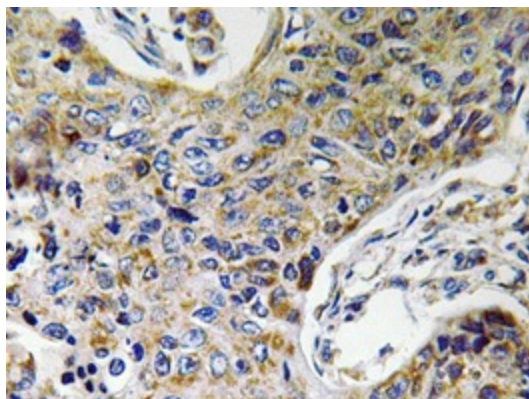


[View online »](#)

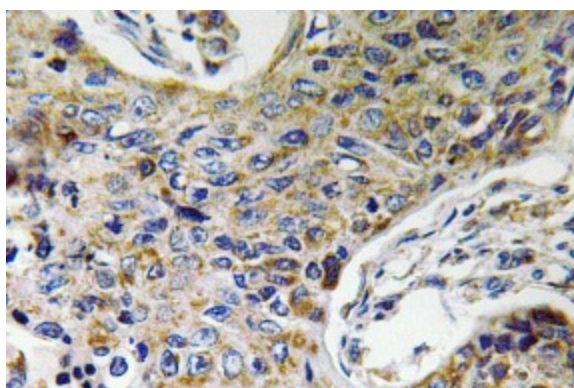
Protein Families: Transmembrane

Protein Pathways: Metabolic pathways, Oxidative phosphorylation

Product images:



Immunohistochemistry analyzes of ATP5J2 antibody (Cat.-No.: [AP20619PU-N]) in paraffin-embedded human lung carcinoma tissue.



Immunohistochemistry (IHC) analyzes of ATP5J2 antibody (Cat.-No.: [AP20619PU-N]) in paraffin-embedded human lung carcinoma tissue.