

Product datasheet for **AP20618PU-N**

RANTES (CCL5) Rabbit Polyclonal Antibody

Product data:

Product Type:	Primary Antibodies
Applications:	IHC, WB
Recommended Dilution:	Western Blot: 1/500-1/1000. Immunohistochemistry on Paraffin Sections: 1/50-1/200.
Reactivity:	Human, Mouse, Rat
Host:	Rabbit
Clonality:	Polyclonal
Immunogen:	Synthetic peptide corresponding to amino acids 50-100 of Human RANTES.
Specificity:	This antibody detects endogenous levels of RANTES protein. (region surrounding Tyr84)
Formulation:	Phosphate buffered saline (PBS), pH~7.2 State: Aff - Purified State: Liquid purified Ig fraction (> 95% pure by SDS-PAGE) Preservative: 0.05% Sodium Azide
Concentration:	1.0 mg/ml
Purification:	Affinity Chromatography using epitope-specific immunogen
Conjugation:	Unconjugated
Storage:	Store undiluted at 2-8°C for one month or (in aliquots) at -20°C for longer. Avoid repeated freezing and thawing.
Stability:	Shelf life: one year from despatch.
Predicted Protein Size:	~10 kDa
Gene Name:	C-C motif chemokine ligand 5
Database Link:	<u>Entrez Gene 20304 Mouse</u> <u>Entrez Gene 81780 Rat</u> <u>Entrez Gene 6352 Human P13501</u>



[View online »](#)

Background:

RANTES is a chemoattractant for blood monocytes, memory T helper cells and eosinophils. It causes the release of histamine from basophils and activates eosinophils. It binds to CCR1, CCR3, CCR4 and CCR5 and is one of the major HIV suppressive factors produced by CD8+ T cells. Recombinant RANTES protein induces a dose dependent inhibition of different strains of HIV 1, HIV 2, and simian immunodeficiency virus (SIV). It is T cell and macrophage specific, induced by mitogens, and belongs to the intercrine beta (chemokine CC) family.

Synonyms:

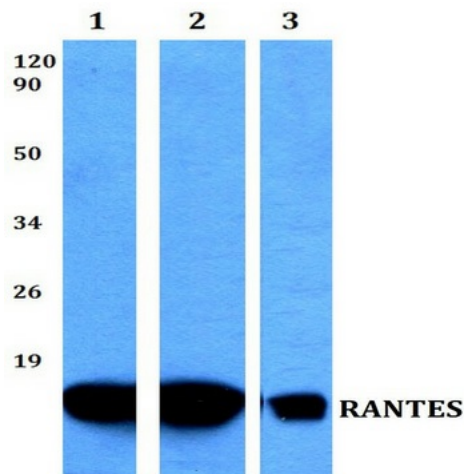
C-C motif chemokine 5, D17S136E, SCYA5, Small-inducible cytokine A5, SIS-delta, EoCP

Protein Families:

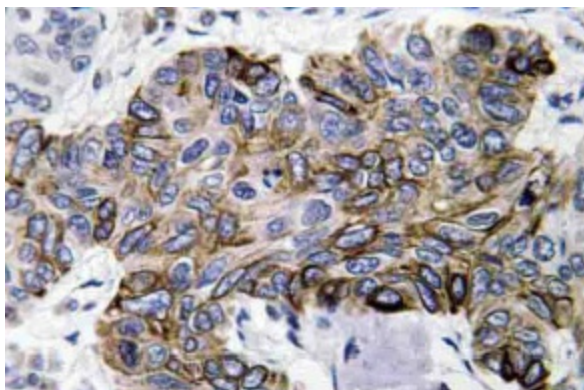
Druggable Genome, Secreted Protein, Transmembrane

Protein Pathways:

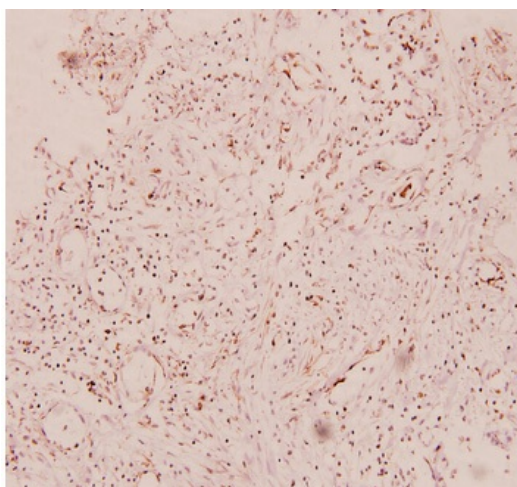
Chemokine signaling pathway, Cytokine-cytokine receptor interaction, Cytosolic DNA-sensing pathway, Epithelial cell signaling in Helicobacter pylori infection, NOD-like receptor signaling pathway, Prion diseases, Toll-like receptor signaling pathway

Product images:


Western blot (WB) analysis of RANTES Antibody at 1/500 dilution. Lane 1: HEK293T whole cell lysate. Lane 2: Raw264.7 whole cell lysate. Lane 3: H9C2 whole cell lysate.



Immunohistochemistry analysis of RANTES Antibody in paraffin-embedded human lung carcinoma tissue.



Immunohistochemistry analysis of RANTES Antibody in paraffin-embedded human breast carcinoma tissue at 1/100.