

## Product datasheet for **AP20617PU-N**

### Leptin (LEP) Rabbit Polyclonal Antibody

#### Product data:

Product Type:	Primary Antibodies
Applications:	IHC
Recommended Dilution:	<b>Immunohistochemistry on paraffin sections</b> 1/50-1/200.
Reactivity:	Human, Mouse, Rat
Host:	Rabbit
Clonality:	Polyclonal
Specificity:	This detects endogenous levels of Ob protein. (region surrounding Lys36)
Formulation:	Phosphate buffered saline (PBS), pH 7.2 State: Aff - Purified State: Liquid purified Ig fraction Preservative: 0.05% sodium azide
Concentration:	1.0 mg/ml
Purification:	Affinity-chromatography using epitope-specific immunogen; purity is > 95% (by SDS-PAGE)
Conjugation:	Unconjugated
Storage:	Store undiluted at 2-8°C for one month or (in aliquots) at -20°C for longer. Avoid repeated freezing and thawing.
Stability:	Shelf life: one year from despatch.
Gene Name:	leptin
Database Link:	<u><a href="#">Entrez Gene 16846 Mouse</a></u> <u><a href="#">Entrez Gene 25608 Rat</a></u> <u><a href="#">Entrez Gene 3952 Human</a></u> <u><a href="#">P41159</a></u>



[View online »](#)

**Background:**

OB Cadherin is a type II classical cadherin from the cadherin superfamily, integral membrane proteins that mediate calcium-dependent cell-cell adhesion. Cadherins are calcium dependent cell adhesion proteins. They preferentially interact with themselves in a homophilic manner in connecting cells; cadherins may thus contribute to the sorting of heterogeneous cell types. Mature cadherin proteins are composed of a large N-terminal extracellular domain, a single membrane-spanning domain, and a small, highly conserved C-terminal cytoplasmic domain. Type II (atypical) cadherins are defined based on their lack of a HAV cell adhesion recognition sequence specific to type I cadherins. Expression of this particular cadherin in osteoblastic cell lines, and its upregulation during differentiation, suggests a specific function in bone development and maintenance. OB Cadherin is expressed in osteoblasts and the brain as well as other tissues. Cadherins constitute a family of transmembrane glycoproteins involved in Ca<sup>2+</sup>-dependent cell-cell interactions. The members of this family are differentially expressed in various tissues.

**Synonyms:**

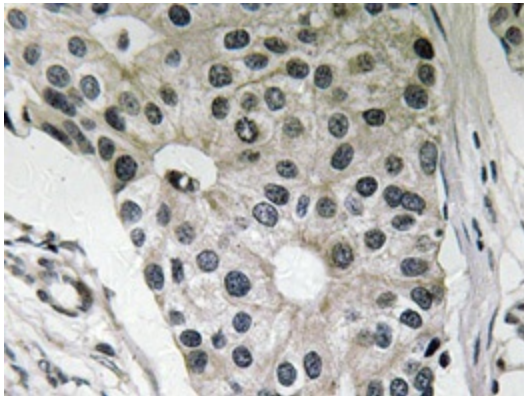
LEP, OB, OBS, Obesity factor, Obese protein

**Protein Families:**

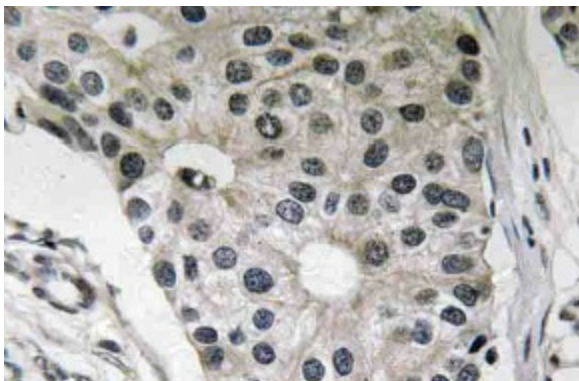
Druggable Genome, Secreted Protein

**Protein Pathways:**

Adipocytokine signaling pathway, Cytokine-cytokine receptor interaction, Jak-STAT signaling pathway, Neuroactive ligand-receptor interaction

**Product images:**

Immunohistochemistry analyzes of Ob antibody (Cat.-No.: AP20617PU-N) in paraffin-embedded human breast carcinoma tissue.



Immunohistochemistry (IHC) analyzes of Ob antibody (Cat.-No.: AP20617PU-N) in paraffin-embedded human breast carcinoma tissue.