

Product datasheet for **AP20616PU-N**

PAX1 Rabbit Polyclonal Antibody

Product data:

| | |
|-------------------------|--------------------------------------------------------------------------------------------------------------------------------------------|
| Product Type: | Primary Antibodies |
| Applications: | IHC, WB |
| Recommended Dilution: | Western blot: 1/500-1/1000. Immunohistochemistry on paraffin sections 1/50-1/200. |
| Reactivity: | Human |
| Host: | Rabbit |
| Clonality: | Polyclonal |
| Specificity: | This antibody detects endogenous levels of Pax-1 protein. (region surrounding Thr367) |
| Formulation: | Phosphate buffered saline (PBS), pH 7.2 State: Aff - Purified State: Liquid purified Ig fraction Preservative: 0.05% sodium azide |
| Concentration: | 1.0 mg/ml |
| Purification: | Affinity-chromatography using epitope-specific immunogen; purity is > 95% (by SDS-PAGE) |
| Conjugation: | Unconjugated |
| Storage: | Store undiluted at 2-8°C for one month or (in aliquots) at -20°C for longer. Avoid repeated freezing and thawing. |
| Stability: | Shelf life: one year from despatch. |
| Predicted Protein Size: | ~ 36 kDa |
| Gene Name: | paired box 1 |
| Database Link: | Entrez Gene 5075 Human P15863 |



[View online »](#)

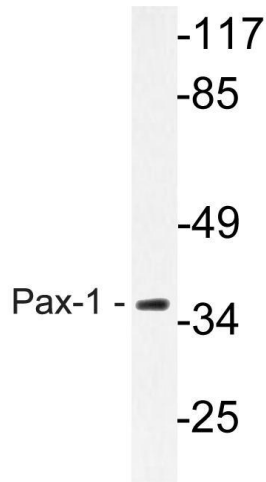
Background:

Pax genes contain paired domains with strong homology to genes in *Drosophila* that are involved in programming early development. Pax-1 is a sequence-specific DNA binding-protein with transcriptional activating properties. The expression pattern of Pax-1 during mouse embryogenesis indicates that it may play an important role in the development of the vertebral column. The autosomal recessive mutation 'undulated' (un) in the mouse exhibits vertebral anomalies along the entire rostrocaudal axis and is associated with a point mutation (G-to-A transition) at position 15 leading to a gly-to-ser replacement in a highly conserved region of the paired box of Pax-1. Pax-1 is required for the normal development of these three skeletal elements: the vertebral column, sternum, and scapula. Mice who are doubly heterozygous for the mutants 'undulated' and 'Patch' have a phenotype reminiscent of an extreme form of spina bifida occulta in humans. The gene which encodes Pax-1 maps to human chromosome 20p11.2.

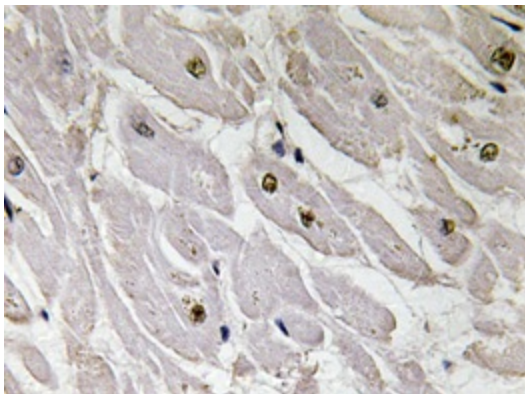
Synonyms:

Pax-1, HUP48

Product images:



Western blot (WB) analysis of Pax-1 antibody (Cat.-No.: AP20616PU-N) in extracts from HeLa cells.



Immunohistochemistry analyzes of Pax-1 antibody (Cat.-No.: AP20616PU-N) in paraffin-embedded human heart tissue.