

## Product datasheet for **AP20615PU-N**

### IL2 Receptor beta (IL2RB) Rabbit Polyclonal Antibody

#### Product data:

Product Type:	Primary Antibodies
Applications:	WB
Recommended Dilution:	<b>Western blot:</b> 1/500-1/1000.
Reactivity:	Human
Host:	Rabbit
Clonality:	Polyclonal
Specificity:	This antibody detects endogenous levels of IL-2R $\beta$ protein. (region surrounding Leu90)
Formulation:	Phosphate buffered saline (PBS), pH 7.2 State: Aff - Purified State: Liquid purified Ig fraction Preservative: 0.05% sodium azide
Concentration:	1.0 mg/ml
Purification:	Affinity-chromatography using epitope-specific immunogen; purity is > 95% (by SDS-PAGE)
Conjugation:	Unconjugated
Storage:	Store undiluted at 2-8°C for one month or (in aliquots) at -20°C for longer. Avoid repeated freezing and thawing.
Stability:	Shelf life: one year from despatch.
Predicted Protein Size:	~ 60 kDa
Gene Name:	interleukin 2 receptor subunit beta
Database Link:	<a href="#">Entrez Gene 3560 Human P14784</a>



[View online »](#)

**Background:**

IL2 Receptor beta (CD122) is a member of the immunoglobulin superfamily that forms the high affinity IL2 receptor with CD25 and CD132. This receptor chain, which is also shared by the IL15 receptor, is constitutively expressed by NK cells and at lower levels by T cells, B cells, monocytes, and macrophages. The IL2 Receptor beta chain can combine with either the common gamma subunit (gamma c) alone or the gamma c subunit and the IL2 Receptor alpha subunit to generate intermediate or high affinity IL2 receptor complexes, respectively. CD122 levels can be upregulated by activation stimuli such as IL2.

**Synonyms:**

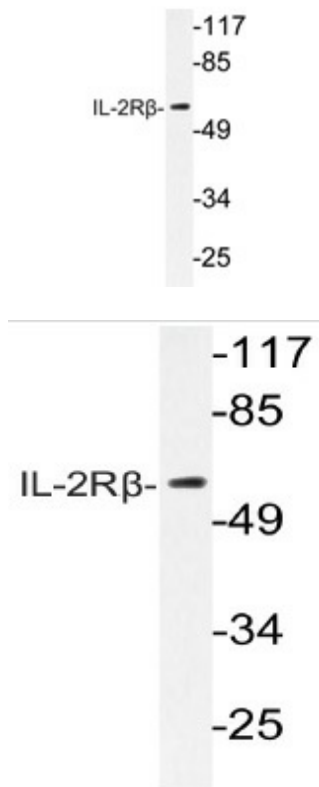
Interleukin-2 receptor subunit beta, IL-2 receptor subunit beta, IL2 Receptor beta, P70-75

**Protein Families:**

Druggable Genome, Transmembrane

**Protein Pathways:**

Cytokine-cytokine receptor interaction, Endocytosis, Jak-STAT signaling pathway

**Product images:**


Western blot analysis of IL-2R $\beta$  antibody (Cat.-No.: AP20615PU-N) in extracts from RAW264.7 cells.

Western blot (WB) analysis of IL-2Rbeta antibody (Cat.-No.: AP20615PU-N) in extracts from RAW264.7 cells.