

Product datasheet for **AP20613PU-M**

IL12A Rabbit Polyclonal Antibody

Product data:

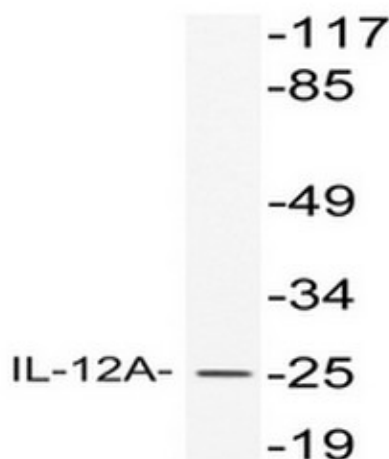
Product Type:	Primary Antibodies
Applications:	IHC, WB
Recommended Dilution:	Immunohistochemistry on paraffin sectins 1/50 - 1/200. Western Blot 1/500 - 1/1000.
Reactivity:	Human, Mouse, Rat
Host:	Rabbit
Clonality:	Polyclonal
Specificity:	This antibody detects endogenous levels of IL-12A protein. (region surrounding Thr65)
Formulation:	PBS, pH 7.2 State: Aff - Purified State: Liquid purified Ig fraction Preservative: 0.05% sodium azide
Concentration:	1.0 mg/ml
Purification:	Affinity chromatography (> 95% (by SDS-PAGE)
Conjugation:	Unconjugated
Storage:	Store undiluted at 2-8°C for one month or (in aliquots) at -20°C for longer. Avoid repeated freezing and thawing.
Stability:	Shelf life: one year from despatch.
Predicted Protein Size:	~ 25 kDa
Gene Name:	interleukin 12A
Database Link:	<u>Entrez Gene 16159 Mouse</u> <u>Entrez Gene 84405 Rat</u> <u>Entrez Gene 3592 Human</u> <u>P29459</u>



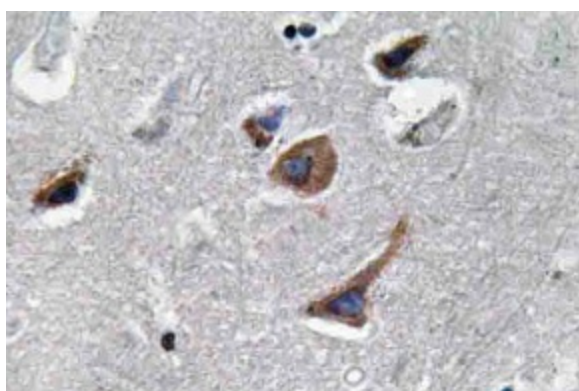
[View online »](#)

Background:	IL-12 is secreted by macrophages and human B-lymphoblastoid cells in response to antigenic stimulation. This IL is responsible for the differentiation of naive CD4+ T cells into type 1 helper T cells that produce interferon- γ (IFN- γ). It also activates production of tumor necrosis factor α (TNF α) from T and natural killer (NK) cells, and it inhibits IL-4 mediated suppression of IFN- γ . IL-12 also has anti-angiogenic activity since the production of IFN- γ increases the production of inducible protein-10 (IP-10). IL-12 p40 represents a subunit of IL-12 that is induced by several pathogens. IL-12 p70 is a subunit of IL-12 that is controlled through both the p35 and p40 genes in a cell type-specific fashion.
Synonyms:	IL-12A, IL-12 subunit p35, NKSF1, CLMF p35
Protein Families:	Druggable Genome, Secreted Protein
Protein Pathways:	Allograft rejection, Cytokine-cytokine receptor interaction, Jak-STAT signaling pathway, RIG-I-like receptor signaling pathway, Toll-like receptor signaling pathway, Type I diabetes mellitus

Product images:



Western blot (WB) analysis of IL-12A antibody (Cat.-No.: [AP20613PU-N]) in extracts from HeLa cells.



Immunohistochemistry (IHC) analysis of IL-12A antibody (Cat.-No.: [AP20613PU-N]) in paraffin-embedded human brain tissue.