

Product datasheet for **AP20612PU-S**

TLR4 Rabbit Polyclonal Antibody

Product data:

Product Type:	Primary Antibodies
Applications:	IHC, WB
Recommended Dilution:	Western blot: 1/500 - 1/1000. Immunohistochemistry on paraffin sections 1/50 - 1/200.
Reactivity:	Human, Mouse
Host:	Rabbit
Clonality:	Polyclonal
Specificity:	This antibody detects endogenous levels of TLR4 protein. (region surrounding Ser441)
Formulation:	Phosphate buffered saline (PBS), pH 7.2. State: Aff - Purified State: Liquid purified Ig fraction Preservative: 0.05% sodium azide
Concentration:	1.0 mg/ml
Purification:	Affinity chromatography (> 95% (by SDS-PAGE)
Conjugation:	Unconjugated
Storage:	Store undiluted at 2-8°C for one month or (in aliquots) at -20°C for longer. Avoid repeated freezing and thawing.
Stability:	Shelf life: one year from despatch.
Predicted Protein Size:	~ 100 kDa
Gene Name:	toll like receptor 4
Database Link:	<u>Entrez Gene 21898 Mouse</u> <u>Entrez Gene 7099 Human</u> <u>O00206</u>



[View online »](#)

Background:

Toll like receptors (TLR) are highly conserved throughout evolution and have been implicated in the innate defense to many pathogens. In *Drosophila* toll is required for the anti fungal response, while the related 18 wheeler is involved in antibacterial defenses. In mammals, TLR identified as type I transmembrane signaling receptors with pattern recognition capabilities have been implicated in the innate host defense to pathogens. TLR4 has been identified next to MD2 and CD14 as a receptor that is central to the innate immune response to lipopolysaccharides (LPS) of Gram negative bacteria.

Synonyms:

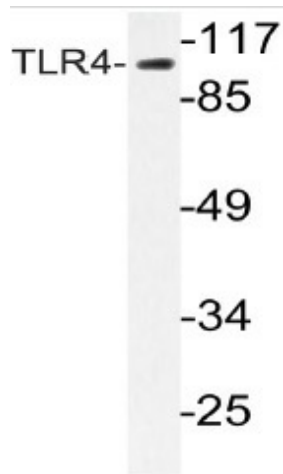
Toll-like receptor 4

Protein Families:

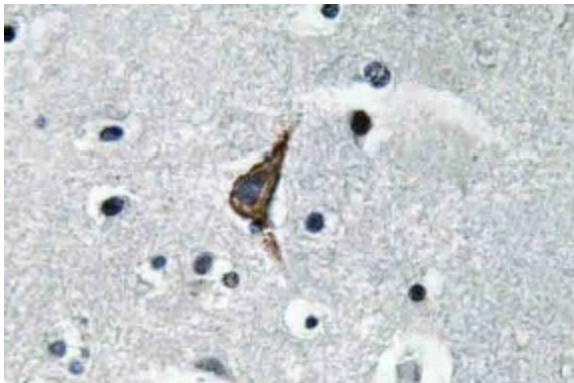
Druggable Genome, Transmembrane

Protein Pathways:

Pathogenic *Escherichia coli* infection, Toll-like receptor signaling pathway

Product images:

Western blot (WB) analysis of TLR4 antibody (Cat.-No.: [AP20612PU-N]) in extracts from HeLa cells.



Immunohistochemistry (IHC) analyzes of TLR4 antibody (Cat.-No.: [AP20612PU-N]) in paraffin-embedded human brain tissue.