

Product datasheet for **AP20609PU-N**

Interferon gamma (IFNG) Rabbit Polyclonal Antibody

Product data:

| | |
|-------------------------|---|
| Product Type: | Primary Antibodies |
| Applications: | IHC, WB |
| Recommended Dilution: | Western Blot: 1/500 - 1/1000. Immunohistochemistry: 1/50 - 1/200. |
| Reactivity: | Human |
| Host: | Rabbit |
| Clonality: | Polyclonal |
| Immunogen: | Synthetic peptide, corresponding to amino acids 31-80 of Human IFN- γ . |
| Specificity: | This antibody detects endogenous levels of IFN-gamma protein. (region surrounding Gln69) |
| Formulation: | Phosphate buffered saline (PBS), pH 7.2. State: Aff - Purified State: Liquid purified Ig fraction Preservative: 0.05% sodium azide |
| Concentration: | 1.0 mg/ml |
| Purification: | Affinity chromatography (> 95% (by SDS-PAGE) |
| Conjugation: | Unconjugated |
| Storage: | Store undiluted at 2-8°C for one month or (in aliquots) at -20°C for longer. Avoid repeated freezing and thawing. |
| Stability: | Shelf life: one year from despatch. |
| Predicted Protein Size: | ~ 19 kDa |
| Gene Name: | interferon, gamma |
| Database Link: | Entrez Gene 3458 Human P01579 |



[View online »](#)

Background:

Interferon (IFN)-gamma is an antiviral and antiparasitic agent produced by CD4+ / CD8+ lymphocytes and natural killer cells that undergo activation by antigens, mitogens or alloantigens. IFN-gamma production modulates T cell growth and differentiation and inhibits the growth of B cells. Synthesis of IFN-gamma is inducible by IL-2, FGF and EGF. The active form of IFN-gamma is a homodimer with each subunit containing six helices. The dimeric structure of human IFN-gamma is stabilized by non-covalent interactions through the interface of the helices. IFN-gamma translated precursor is 166 amino acids, including the 23 amino acid secretory sequence. 20 kDa and 25 kDa forms exist due to variable glycosylation; 40-60 kDa forms are observable under non-denaturing conditions as dimers and tetramers.

Synonyms:

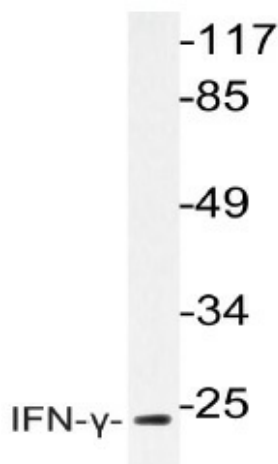
IFN-gamma, gamma IFN

Protein Families:

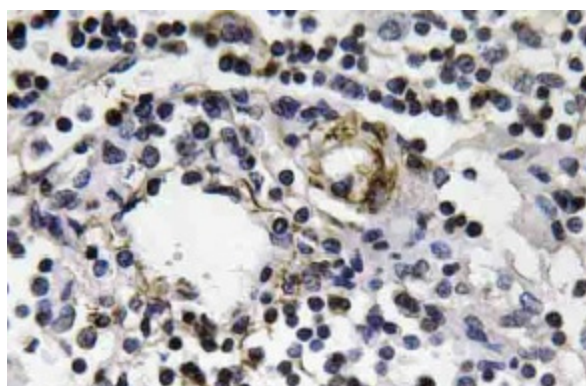
Druggable Genome, Secreted Protein

Protein Pathways:

Allograft rejection, Cytokine-cytokine receptor interaction, Graft-versus-host disease, Jak-STAT signaling pathway, Natural killer cell mediated cytotoxicity, Proteasome, Regulation of autophagy, Systemic lupus erythematosus, T cell receptor signaling pathway, TGF-beta signaling pathway, Type I diabetes mellitus

Product images:

Western blot (WB) analysis of IFN-gamma antibody in extracts from HepG2 cells.



Immunohistochemistry (IHC) analyzes of IFN-gamma antibody in paraffin-embedded human lymph node tissue.