

## Product datasheet for **AP20608PU-M**

### Angiotensin Converting Enzyme 1 (ACE) Rabbit Polyclonal Antibody

#### Product data:

Product Type:	Primary Antibodies
Applications:	IHC, WB
Recommended Dilution:	<b>Western blot:</b> 1/500 - 1/1000. <b>Immunohistochemistry on paraffin sections</b> 1/50 - 1/200.
Reactivity:	Human, Mouse, Rat
Host:	Rabbit
Clonality:	Polyclonal
Specificity:	This antibody detects endogenous levels of BNIP-2 protein. (region surrounding Phe940)
Formulation:	Phosphate buffered saline (PBS), pH 7.2. State: Aff - Purified State: Liquid purified Ig fraction Preservative: 0.05% sodium azide
Concentration:	1.0 mg/ml
Purification:	Affinity chromatography (> 95% (by SDS-PAGE)
Conjugation:	Unconjugated
Storage:	Store undiluted at 2-8°C for one month or (in aliquots) at -20°C for longer. Avoid repeated freezing and thawing.
Stability:	Shelf life: one year from despatch.
Predicted Protein Size:	~ 165 kDa
Gene Name:	angiotensin I converting enzyme
Database Link:	<u><a href="#">Entrez Gene 11421 Mouse</a></u> <u><a href="#">Entrez Gene 24310 Rat</a></u> <u><a href="#">Entrez Gene 1636 Human</a></u> <u><a href="#">P12821</a></u>



[View online »](#)

## Background:

The adenovirus E1B protein is a viral homolog of the Bcl-2 family of proteins that are involved in regulating cell death. A family of interacting proteins, which are designated Nip or Bnip and include BNIP-1, BNIP-2, BNIP-3 and Nix, associate with both the E1B protein and Bcl-2 proteins to mediate apoptotic signaling. BNIP-1 contains a hydrophobic transmembrane domain, which enables its localization to the nuclear envelope, endoplasmic reticulum and mitochondria. BNIP-2, (previously designated Nip2 and Nip21 in human and mouse respectively), shares homology with the non-catalytic domain of Cdc42 GTPase-activating protein (Cdc42GAP). Through binding to Cdc42GAP, BNIP-2 enhances the GTPase activity of Cdc42GAP, facilitating the hydrolysis of GTP bound to Cdc42 and thereby, mediating the signaling pathways involving receptor kinases, small GTPases and apoptotic proteins. Nix, which is also designated Nip3L or Bnip3L, is highly related to BNIP-3, and both proteins localize to the mitochondria where they associate with Bcl-2 proteins.

## Synonyms:

DCP, DCP1, Angiotensin-converting enzyme

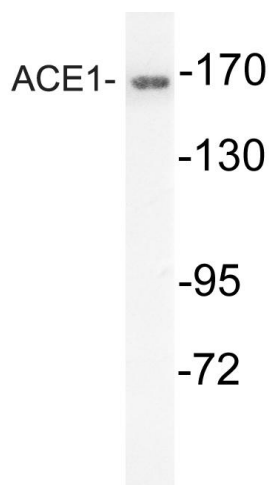
## Protein Families:

Druggable Genome, ES Cell Differentiation/IPS, Protease, Secreted Protein, Transmembrane

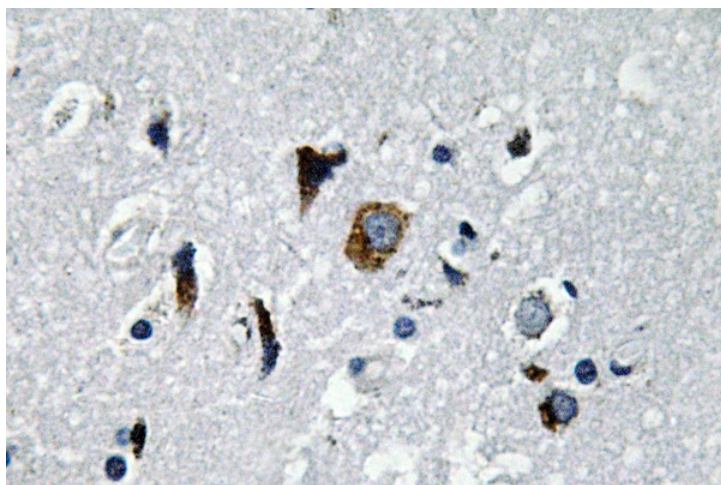
## Protein Pathways:

Hypertrophic cardiomyopathy (HCM), Renin-angiotensin system

## Product images:



Western blot (WB) analysis of ACE1 antibody (Cat.-No.: [AP20608PU-N]) in extracts from mouse kidney cells.



Immunohistochemistry (IHC) analyzes of ACE1 antibody (Cat.-No.: [AP20608PU-N]) in paraffin-embedded human brain tissue.