

## Product datasheet for **AP20604PU-M**

### IL12B Rabbit Polyclonal Antibody

#### Product data:

Product Type:	Primary Antibodies
Applications:	WB
Recommended Dilution:	<b>Western blot:</b> 1/500 - 1/1000.
Reactivity:	Human
Host:	Rabbit
Clonality:	Polyclonal
Specificity:	This antibody detects endogenous levels of IL-12B protein. (region surrounding Val277)
Formulation:	Phosphate buffered saline (PBS), pH 7.2. State: Aff - Purified State: Liquid purified Ig fraction Preservative: 0.05% sodium azide
Concentration:	1.0 mg/ml
Purification:	Affinity chromatography (> 95% (by SDS-PAGE)
Conjugation:	Unconjugated
Storage:	Store undiluted at 2-8°C for one month or (in aliquots) at -20°C for longer. Avoid repeated freezing and thawing.
Stability:	Shelf life: one year from despatch.
Predicted Protein Size:	~ 44 kDa
Gene Name:	interleukin 12B
Database Link:	<a href="#">Entrez Gene 3593 Human P29460</a>



[View online »](#)

**Background:**

The interleukins (ILs) are a broad family of well characterized cytokines, primarily of hematopoietic cell origin. As new cytokines are molecularly characterized, they are assigned an IL number to maintain a standard nomenclature. ILs are secreted by immune cells that regulate a wide range of immune system functions. IL-12 is secreted by macrophages and human B-lymphoblastoid cells in response to antigenic stimulation. This IL is responsible for the differentiation of naive CD4<sup>+</sup> T cells into type 1 helper T cells that produce interferon-gamma (IFN-gamma). It also activates production of tumor necrosis factor alpha (TNFalpha) from T and natural killer (NK) cells, and it inhibits IL-4 mediated suppression of IFN-gamma. IL-12 also has anti-angiogenic activity since the production of IFN-gamma increases the production of inducible protein-10 (IP-10). IL-12 p40 represents a subunit of IL-12 that is induced by several pathogens. IL-12 p70 is a subunit of IL-12 that is controlled through both the p35 and p40 genes in a cell type-specific fashion.

**Synonyms:**

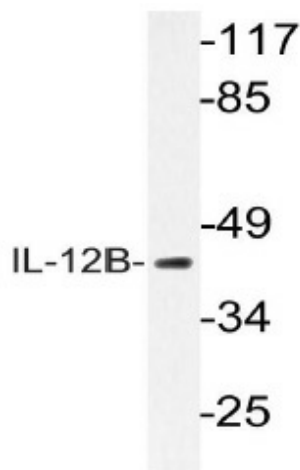
Interleukin-12B, IL-12B, IL-12 subunit p40, CLMF p40, NKSF2

**Protein Families:**

Druggable Genome, Secreted Protein, Transmembrane

**Protein Pathways:**

Allograft rejection, Cytokine-cytokine receptor interaction, Jak-STAT signaling pathway, RIG-I-like receptor signaling pathway, Toll-like receptor signaling pathway, Type I diabetes mellitus

**Product images:**


Western blot (WB) analysis of IL-12B antibody (Cat.-No.: [AP20604PU-N]) in extracts from K562 cells.