

Product datasheet for **AP20603PU-M**

IL8 (CXCL8) Rabbit Polyclonal Antibody

Product data:

Product Type:	Primary Antibodies
Applications:	IHC, WB
Recommended Dilution:	Western blot: 1/500 - 1/1000. Immunohistochemistry on paraffin sections 1/50 - 1/200.
Reactivity:	Human
Host:	Rabbit
Clonality:	Polyclonal
Specificity:	This antibody detects endogenous levels of IL-8 protein. (region surrounding Val68)
Formulation:	Phosphate buffered saline (PBS), pH 7.2. State: Aff - Purified State: Liquid purified Ig fraction Preservative: 0.05% sodium azide
Concentration:	1.0 mg/ml
Purification:	Affinity chromatography (> 95% (by SDS-PAGE)
Conjugation:	Unconjugated
Storage:	Store undiluted at 2-8°C for one month or (in aliquots) at -20°C for longer. Avoid repeated freezing and thawing.
Stability:	Shelf life: one year from despatch.
Predicted Protein Size:	~ 38 kDa
Gene Name:	C-X-C motif chemokine ligand 8
Database Link:	<u>Entrez Gene 3576 Human P10145</u>



[View online »](#)

Background:

IL-8 has been shown to function as a potent neutrophil chemostatic and activating peptide and is an important mediator of inflammatory diseases. Two distinct human IL-8 receptors, designated IL-8RA and IL-8RB, have been characterized. Both are expressed at a high level on neutrophils, and to a lesser extent on monocytes and myeloid cell lines. In addition, the IL-8RA subunit is expressed in T cells such as the Jurkat cell line. Both IL-8Rs are members of the seven transmembrane domain rhodopsin superfamily of receptors and as such, couple G proteins for signal transduction. The two receptors share 77% amino acid identity. IL-8RA exhibits high affinity binding for IL-8 and low affinity MGSA binding, whereas IL-8RB has high affinity binding for both IL-8 and MGSA.

Synonyms:

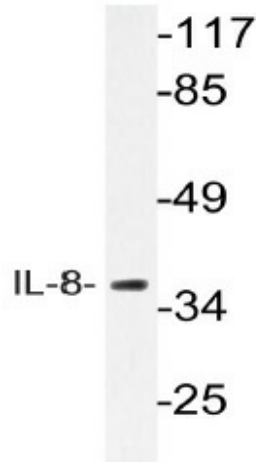
CXCL8, Protein 3-10C, Emotakin, GCP1, MDNCF, MONAP, NAP1

Protein Families:

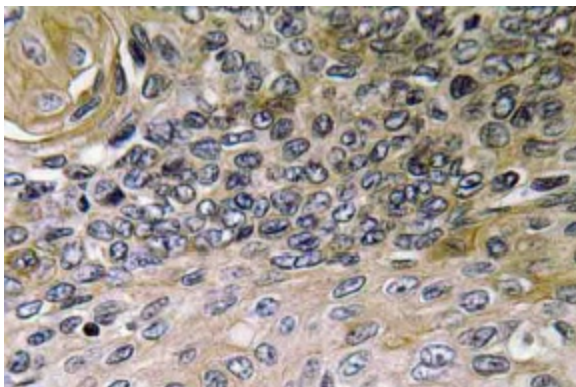
Druggable Genome, Secreted Protein, Transmembrane

Protein Pathways:

Bladder cancer, Chemokine signaling pathway, Cytokine-cytokine receptor interaction, Epithelial cell signaling in Helicobacter pylori infection, NOD-like receptor signaling pathway, Pathways in cancer, RIG-I-like receptor signaling pathway, Toll-like receptor signaling pathway

Product images:


Western blot (WB) analysis of IL-8 antibody (Cat.-No.: [AP20603PU-N]) in extracts from HeLa cells.



Immunohistochemistry (IHC) analysis of IL-8 antibody (Cat.-No.: [AP20603PU-N]) in paraffin-embedded human lung carcinoma tissue.