

Product datasheet for **AP20602PU-S**

S100A10 Rabbit Polyclonal Antibody

Product data:

Product Type:	Primary Antibodies
Applications:	IHC, WB
Recommended Dilution:	Western blot: 1/500 - 1/1000. Immunohistochemistry on paraffin sections 1/50 - 1/200.
Reactivity:	Human, Mouse, Rat
Host:	Rabbit
Clonality:	Polyclonal
Specificity:	This antibody detects endogenous levels of S-100A10 protein. (region surrounding Val52)
Formulation:	PBS, pH 7.2 State: Aff - Purified State: Liquid purified Ig fraction Preservative: 0.05% sodium azide
Concentration:	1.0 mg/ml
Purification:	Affinity chromatography (> 95% (by SDS-PAGE)
Conjugation:	Unconjugated
Storage:	Store undiluted at 2-8°C for one month or (in aliquots) at -20°C for longer. Avoid repeated freezing and thawing.
Stability:	Shelf life: one year from despatch.
Predicted Protein Size:	~ 11 kDa
Gene Name:	S100 calcium binding protein A10
Database Link:	<u>Entrez Gene 20194 Mouse</u> <u>Entrez Gene 81778 Rat</u> <u>Entrez Gene 6281 Human</u> <u>P60903</u>



[View online »](#)

Background:

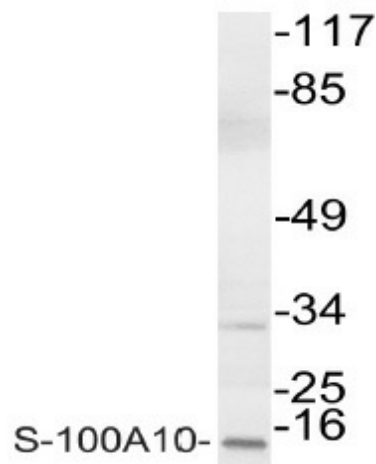
The S-100 family of calcium-activated proteins interact with a range of target proteins to modulate biological signaling pathways. Numerous cancer cell lines overexpress the plasminogen receptor S-100A10 on the extracellular cell surface, where it forms a heterotetrameric complex with Annexin II, though this association is not required for plasma membrane localization or binding and activation of plasminogen. Additionally, S-100A10 acts as a cellular chaperone for hepatitis B (Hep B) virus polymerase. Hep B virus polymerase normally localizes to the cytoplasm only, though in the presence of S-100A10 a portion relocates to the nucleus, implying a role for S-100A10 and intracellular calcium in the process of viral replication.

Synonyms:

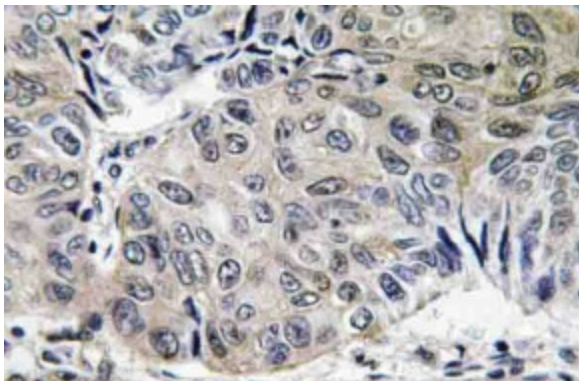
S100-A10, ANX2LG, CAL1L, CLP11, Calpactin-1 light chain

Protein Families:

Transmembrane

Product images:

Western blot (WB) analysis of S-100A10 antibody (Cat.-No.: [AP20602PU-N]) in extracts from COLO cells.



Immunohistochemistry (IHC) analyzes of S-100A10 antibody (Cat.-No.: [AP20602PU-N]) in paraffin-embedded human lung carcinoma tissue.