

Product datasheet for **AP20600PU-M**

CD3E Rabbit Polyclonal Antibody

Product data:

Product Type:	Primary Antibodies
Applications:	IHC, WB
Recommended Dilution:	Immunohistochemistry on paraffin sections 1/50 - 1/200.
Reactivity:	Human, Mouse, Rat
Host:	Rabbit
Clonality:	Polyclonal
Immunogen:	Synthetic peptide, corresponding to amino acids 31-80 of Human CD3-ε.
Specificity:	This antibody detects endogenous levels of CD3-epsilon protein. (region surrounding Asp71)
Formulation:	Phosphate buffered saline (PBS), pH 7.2. State: Aff - Purified State: Liquid purified Ig fraction Preservative: 0.05% sodium azide
Concentration:	1.0 mg/ml
Purification:	Affinity chromatography (> 95% (by SDS-PAGE)
Conjugation:	Unconjugated
Storage:	Store undiluted at 2-8°C for one month or (in aliquots) at -20°C for longer. Avoid repeated freezing and thawing.
Stability:	Shelf life: one year from despatch.
Predicted Protein Size:	~ 21 kDa
Gene Name:	CD3e molecule
Database Link:	Entrez Gene 12501 Mouse Entrez Gene 315609 Rat Entrez Gene 916 Human P07766



[View online »](#)

Background:

The T cell antigen receptor (TCR) recognizes foreign antigens and translates such recognition events into intracellular signals that elicit a change in the cell from a dormant to an activated state. Much of this signaling process can be attributed to a multisubunit complex of proteins that associates directly with the TCR. This complex has been designated CD3 (Cluster of Differentiation 3). It is composed of five invariant polypeptide chains that associate to form three dimers: a heterodimer of gamma and epsilon chains (gamma-epsilon), a heterodimer of delta and epsilon chains (delta-epsilon) and a homodimer of two zeta chains (zeta-zeta) or a heterodimer of zeta and eta chains (zeta-eta). The zeta and eta chains are encoded by the same gene but differ in their carboxyl-terminal ends due to an alternative splicing event. The gamma, epsilon and delta chains each contain a single copy of a conserved immunoreceptor tyrosine-based activation motif (ITAM). In contrast, the zeta chain contains three consecutive copies of the same motif.

Synonyms:

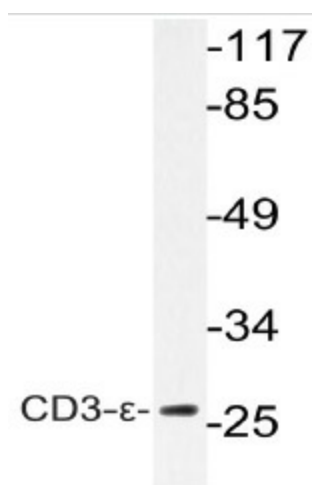
T3/Leu-4

Protein Families:

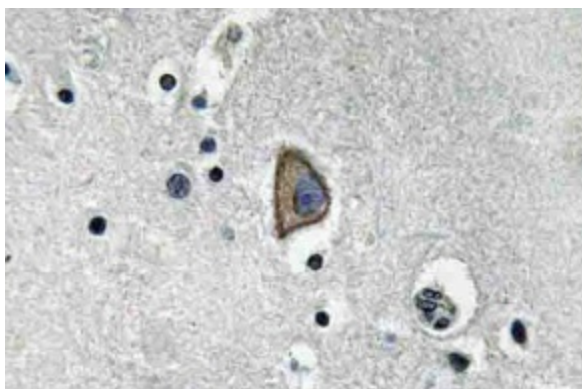
Druggable Genome, Transmembrane

Protein Pathways:

Hematopoietic cell lineage, Primary immunodeficiency, T cell receptor signaling pathway

Product images:


Western blot (WB) analysis of CD3-epsilon antibody (Cat.-No.: [AP20600PU-N]) in extracts from K562 cells.



Immunohistochemistry (IHC) analyzes of CD3-epsilon antibody (Cat.-No.: [AP20600PU-N]) in paraffin-embedded human brain tissue.