

## Product datasheet for **AP20598PU-M**

### CD63 Rabbit Polyclonal Antibody

#### Product data:

Product Type:	Primary Antibodies
Applications:	IHC, WB
Recommended Dilution:	<b>Western blot:</b> 1/500-1/2000. <b>Immunohistochemistry on Paraffin Sections:</b> 1/50-1/200.
Reactivity:	Human
Host:	Rabbit
Clonality:	Polyclonal
Specificity:	This detects endogenous levels of CD63 protein. (region surrounding Lys156)
Formulation:	Phosphate buffered saline (PBS), pH~7.2 State: Aff - Purified State: Liquid purified Ig fraction (> 95% pure by SDS-PAGE) Preservative: 0.05% Sodium Azide
Concentration:	1.0 mg/ml
Purification:	Affinity Chromatography using epitope-specific immunogen
Conjugation:	Unconjugated
Storage:	Store undiluted at 2-8°C for one month or (in aliquots) at -20°C for longer. Avoid repeated freezing and thawing.
Stability:	Shelf life: one year from despatch.
Predicted Protein Size:	~ 17, 23, 26 kDa
Gene Name:	CD63 molecule
Database Link:	<a href="#">Entrez Gene 967 Human P08962</a>



[View online »](#)

**Background:**

The tetraspanins are integral membrane proteins expressed on cell surface and granular membranes of hematopoietic cells and are components of multimolecular complexes with specific integrins. The tetraspanin CD63 (also known as LAMP-3, Melanoma-associated antigen ME491, TSPAN30, MLA1 and OMA81H) is a lysosomal membrane glycoprotein that translocates to the plasma membrane after platelet activation. CD63 is expressed on activated platelets, monocytes and macrophages, and is weakly expressed on granulocytes, T cell and B cells. It is located on the basophilic granule membranes and on the plasma membranes of lymphocytes and granulocytes. CD63 is a member of the TM4 superfamily of leukocyte glycoproteins that includes CD9, CD37 and CD53, which contain four transmembrane regions. CD63 may play a role in phagocytic and intracellular lysosome-phagosome fusion events. CD63 deficiency is associated with Hermansky-Pudlak syndrome.

**Synonyms:**

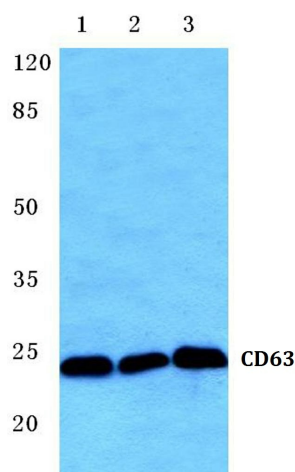
OMA81H, Granulophysin, Tetraspanin-30, MLA1, TSPAN30, ME491

**Protein Families:**

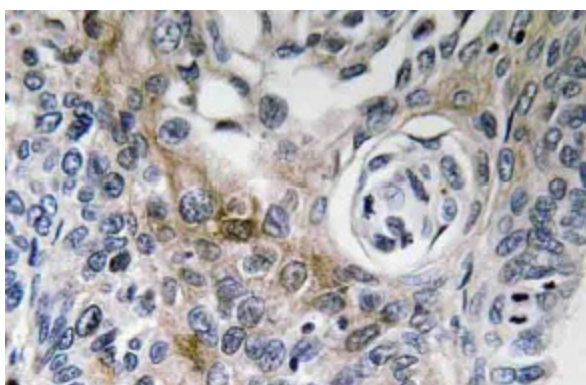
Druggable Genome, Transmembrane

**Protein Pathways:**

Lysosome

**Product images:**


Western blot (WB) analysis of CD63 antibody (Cat.-No.: [AP20598PU-N]) at 1/500 dilution Lane 1:HEK293T cell lysate Lane 2:Raw264.7 cell lysate Lane 3:H9C2 cell lysate



Immunohistochemistry analysis of CD63 antibody (Cat.-No.: [AP20598PU-N]) in Paraffin-Embedded Human lung carcinoma tissue.